

APPLICATIONS

Used for Disco, Vocal P.A. or Keyboard instruments where space or Transportation Volume is restricted.

LOUDSPEAKERS

Classic T & CT Models up to 12/100 CT
Specialist Disco 80-100-200
Crescendo 12/100 CT.

PERFORMANCE

From between 45 Hz-65 Hz up to 14-20 kHz and a sensitivities 99 dB to 103 dB for 1 Watt, 1 Metre depending on the Model selected. Good Mid-range quality, Treble and Mid-balanced to give more emphasis to the Bass Response.

CONSTRUCTION

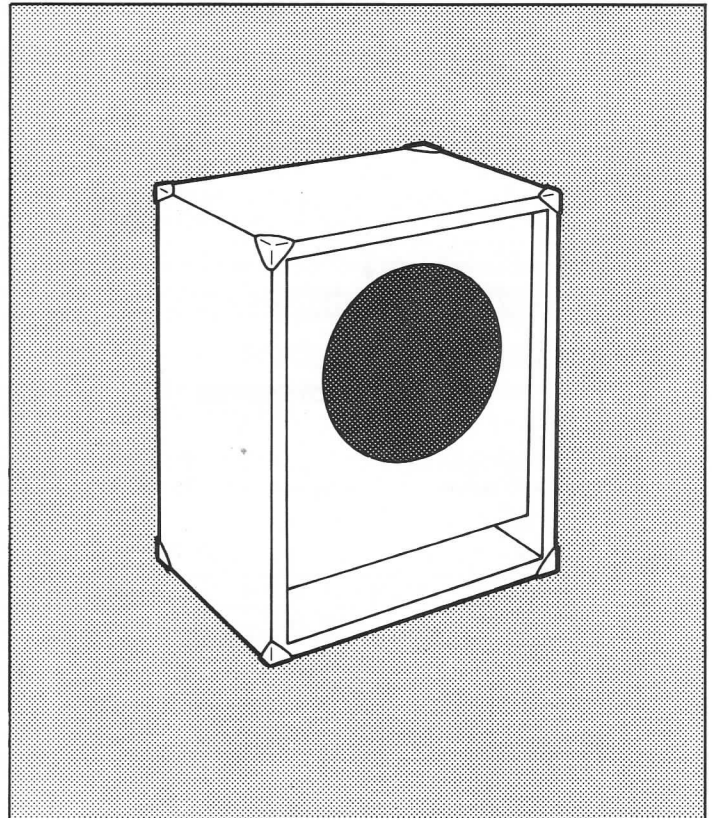
Simple and straightforward
Select Duct Dimensions to suit the loudspeaker.

MATERIALS

$\frac{2}{3}$ sheet of 18mm ($\frac{3}{4}$ ") Board 8' x 4' size (2438 x 1219).

VOLUME

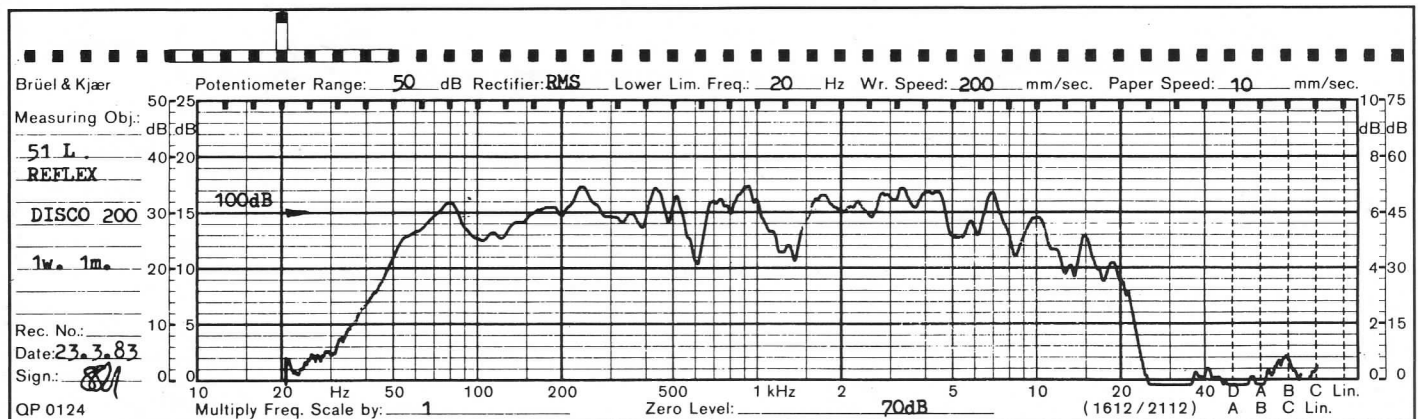
3200 cubic inches. 51 Litres.

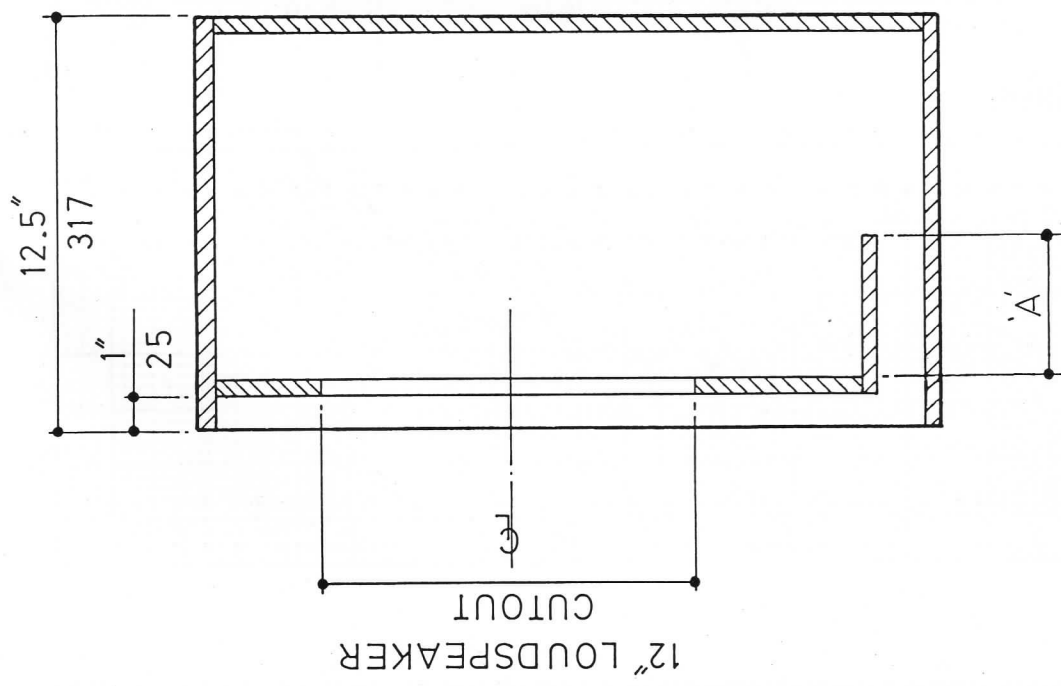


SPECIAL NOTES

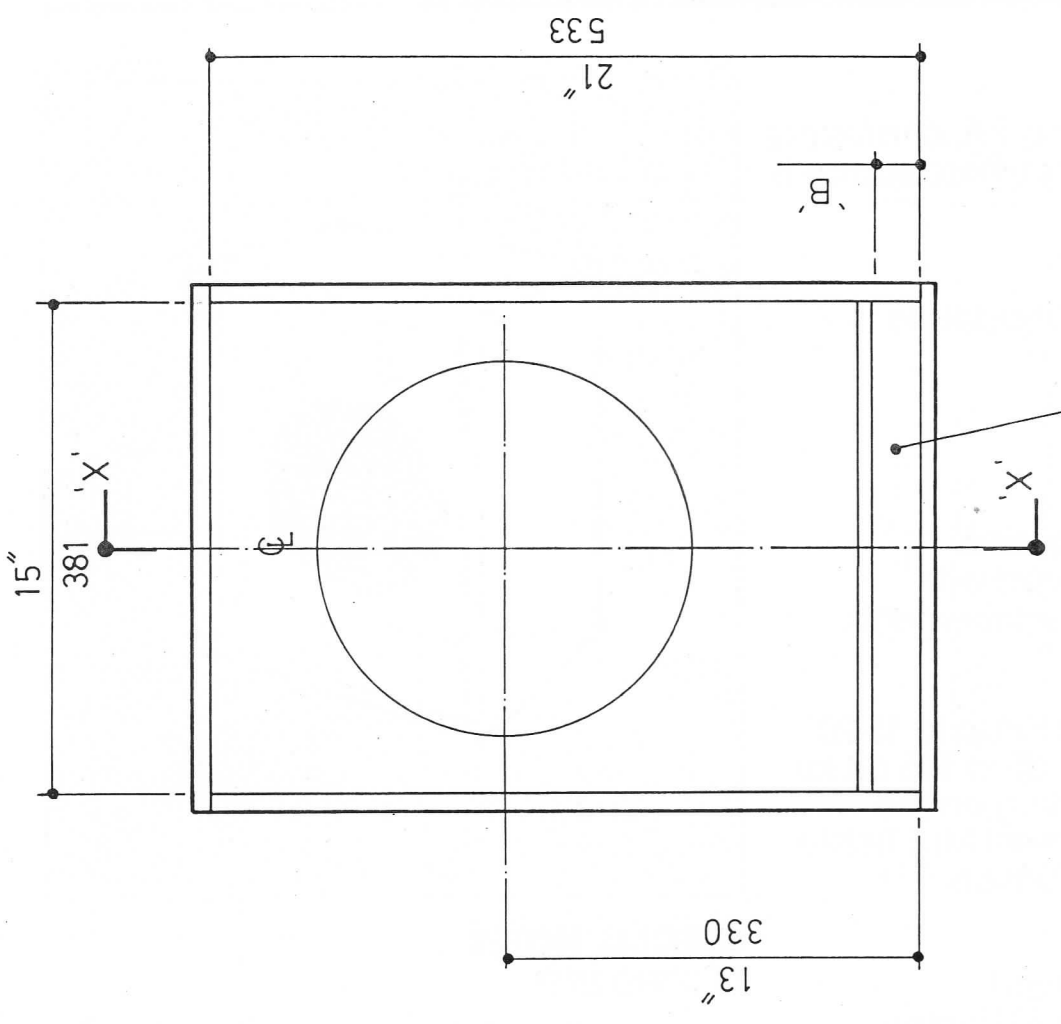
DUCTING SIZES

Resonance of Loudspeaker	Dim. 'A'	Dim. 'B'
50 Hz	4 $\frac{3}{4}$ "	1.187"
55 Hz	3 $\frac{1}{2}$ "	1.187"
60 Hz	0	$\frac{3}{4}$ "
70 Hz	0	1 $\frac{1}{4}$ "





SECTION 'A-A'



DUCTED PORT

COMPACT REFLEX CABINET

2 WAY SYSTEM

APPLICATIONS

Used for Full range Disco, P.A. or musical instrument applications where space is restricted.

LOUDSPEAKERS

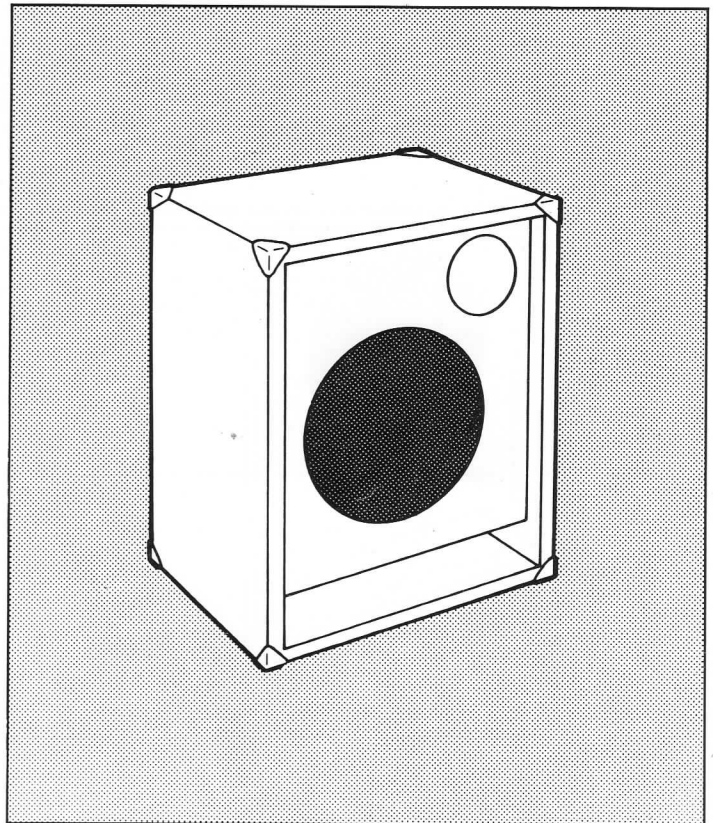
Classic, Standard or C models to 12/150 C.
Crescendo 12/100 CT.
Studio 12 G, B or L.

HORNS

HF 250 or ST 5020 as required.
J 44, J 73, J 104 as required with crossovers to suit Horn requirements.

PERFORMANCE

From between 40 Hz-60 Hz up to 15-20 kHz and a sensitivity 97 dB to 105 dB for 1 Watt, 1 Metre depending on the models selected. Improved Mid/Treble quality over Full range Drivers.



CONSTRUCTION

Simple and straightforward
Select Duct Dimensions to suit the loudspeaker. Position and cut Horn opening to suit model selected.

MATERIALS

$\frac{1}{2}$ sheet of 18mm ($\frac{3}{4}$ "') Board 8' x 4' size (2438 x 1219).

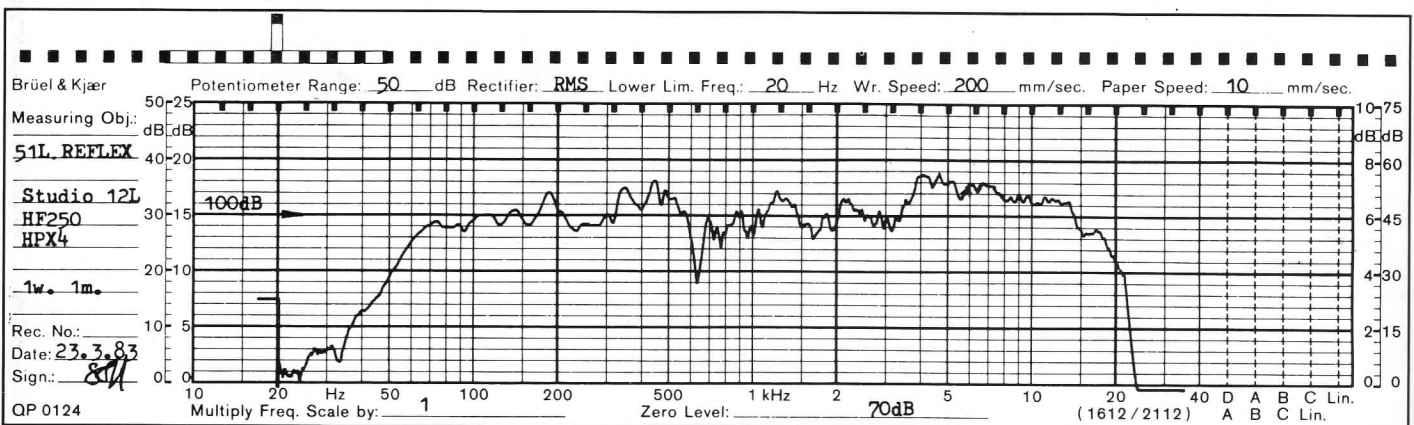
VOLUME

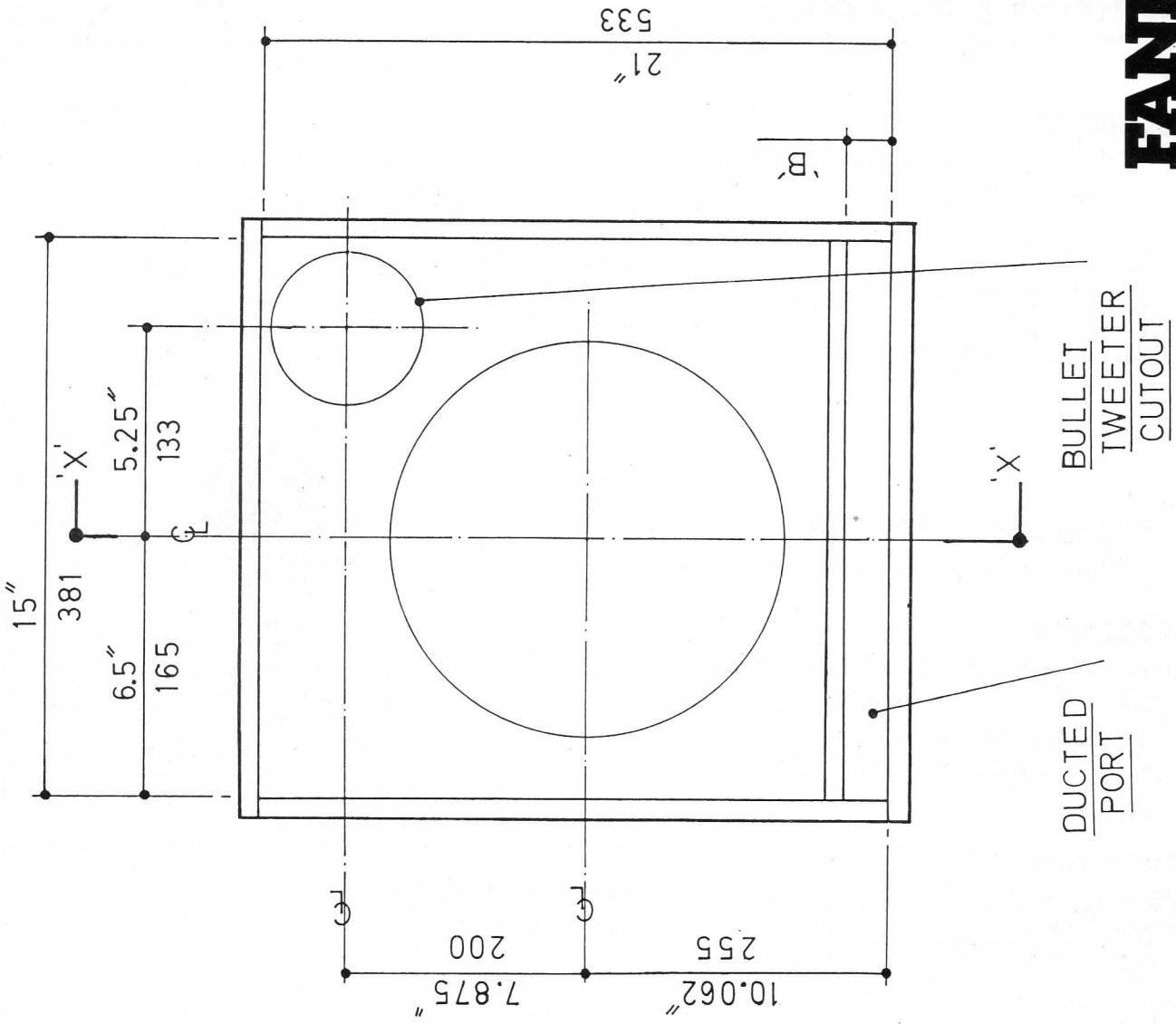
3200 cubic inches. 51 Litres.

SPECIAL NOTES

DUCTING SIZES

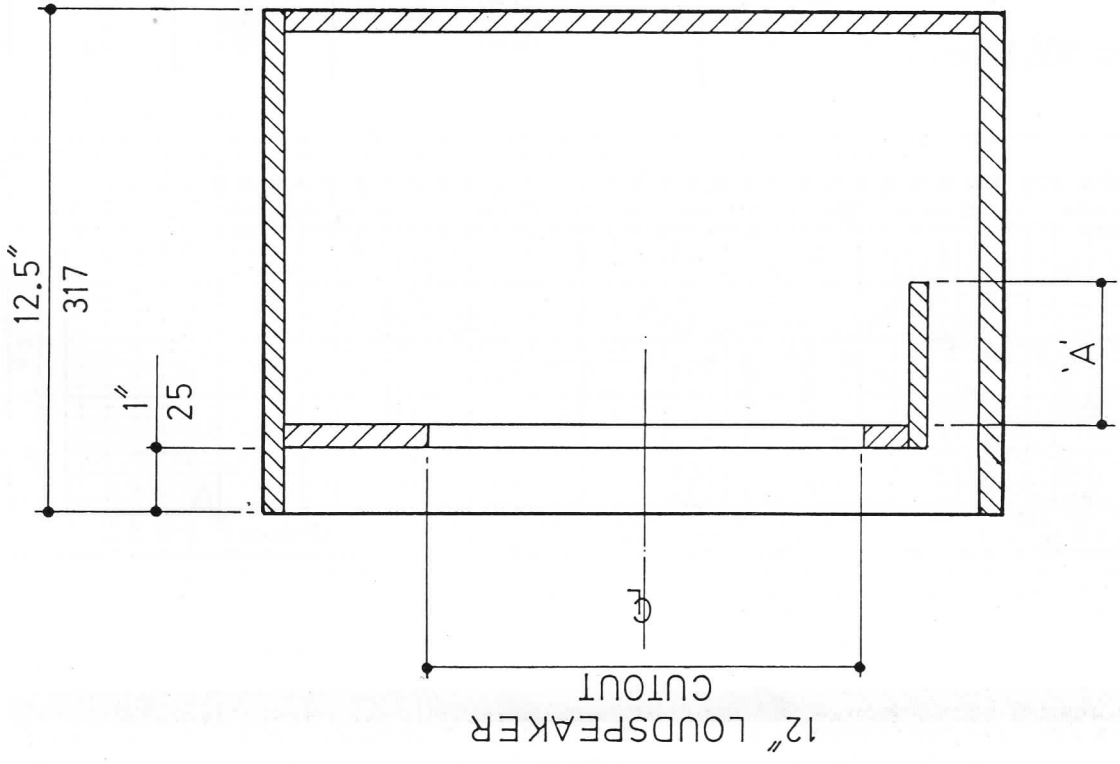
Resonance of Loudspeaker	Dim. 'A'	Dim. 'B'
45 Hz	5"	1.187"
50 Hz	4 $\frac{3}{4}$ "	1.187"
55 Hz	3 $\frac{1}{2}$ "	1.187"
60 Hz	0	$\frac{3}{4}$ "
70 Hz	0	1 $\frac{1}{4}$ "





BULLET
TWEETER
CUTOUT

DUCTED
PORT



SECTION 'X-X'

APPLICATIONS

Used for Full range Disco, P.A. or musical instrument applications.

LOUDSPEAKERS

Classic 15 Standard or C models
Specialist Bass 100.
Crescendo 15E or 15/200E.
Studio 15 B, L or G.
Colossus 15E.

HORNS

J 105 or HF 250 or St 5020 Bullets.
Crossovers to suit horn requirements.

PERFORMANCE

From between 35 Hz-60 Hz up to 20 kHz with 99 dB to 104 dB sensitivity for 1 Watt, 1 Metre depending on models selected. Good Bass with smooth Mid-range.

CONSTRUCTION

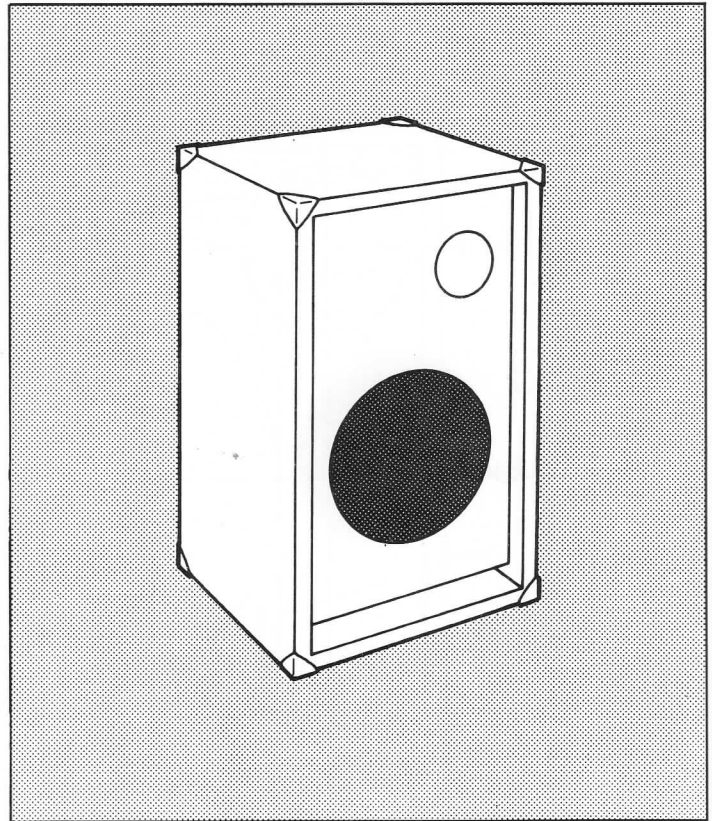
Straightforward. Bracing important in this cabinet. Select Duct to suit loudspeaker. Position and cut Horn opening to suit model selected.

MATERIALS

1 sheet of 18mm ($\frac{3}{4}$ "') Board 8' x 4' size (2438 x 1219).

VOLUME

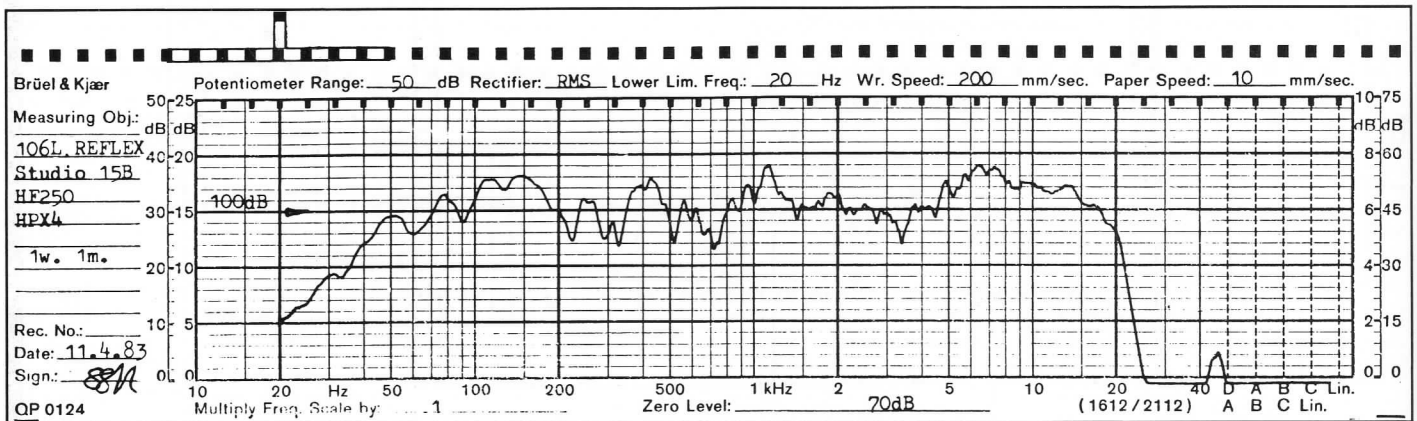
6670 cubic inches. 106 Litres.

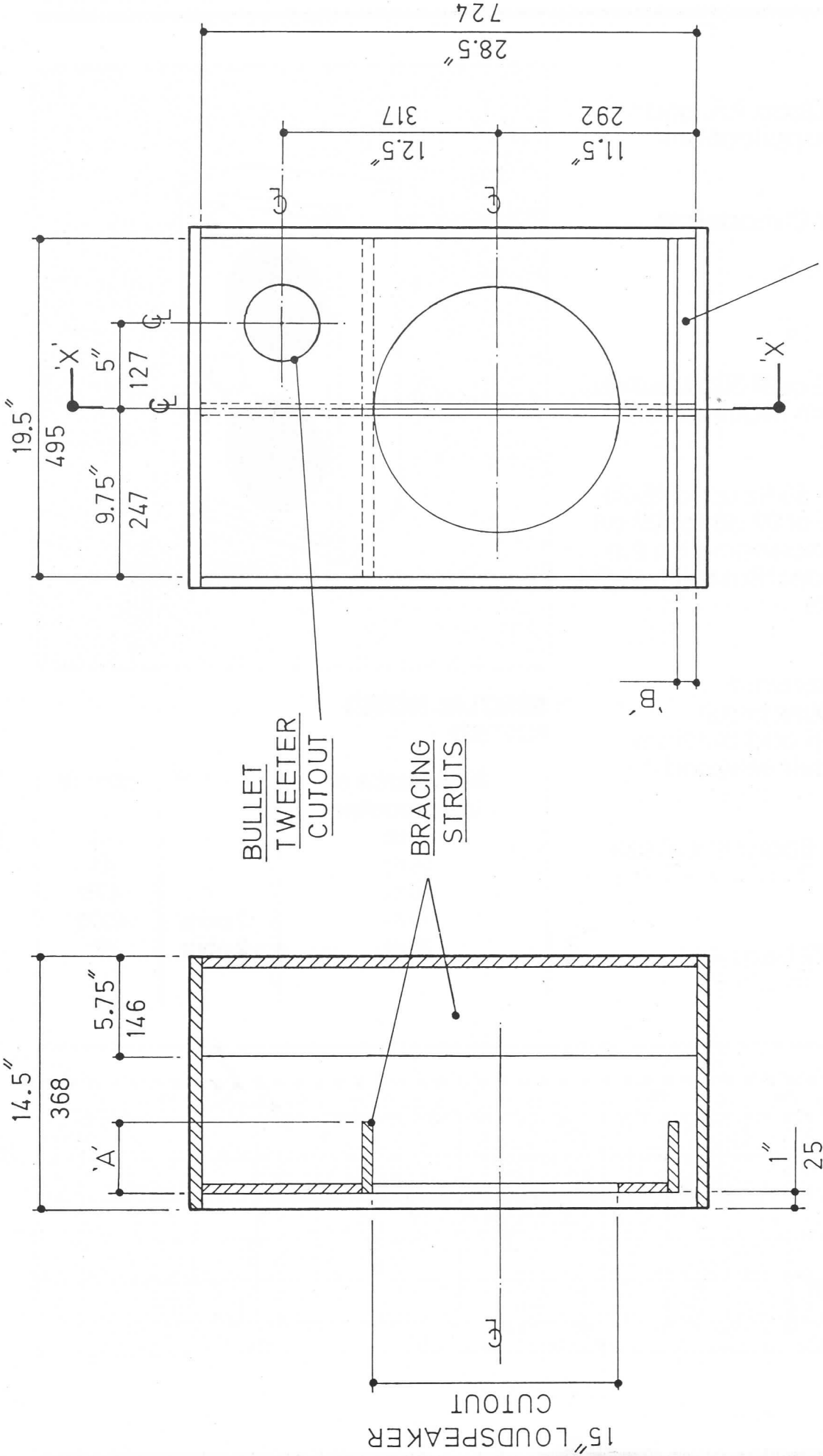


SPECIAL NOTES

DUCTING SIZES

Resonance of Loudspeaker	Dim. 'A'	Dim. 'B'
40 Hz	3 $\frac{1}{4}$ "	1"
45 Hz	0	$\frac{5}{8}$ "
55 Hz	0	1 $\frac{3}{16}$ "
60 Hz	0	$\frac{5}{8}$ "
65 Hz	0	2"
70 Hz	0	2 $\frac{1}{2}$ "





2 WAY REFLEX SYSTEM

TWO 12" DRIVERS

APPLICATIONS

Used for Full range Disco, P.A. and musical instrument applications.

LOUDSPEAKERS

Classic, Standard or C models to 12/150 C.
Crescendo 12/100.
Studio 12 G, B or L.

HORNS

J Series horns HF 250 or ST 5020. Bullets.
Crossovers to suit Horn requirements.

PERFORMANCE

From between 40 Hz-60 Hz up to 15-20 kHz and a sensitivity of 99 dB to 107 dB for 1 Watt, 1 Metre depending on the models selected. Good Bass with slight Mid-range emphasis.

CONSTRUCTION

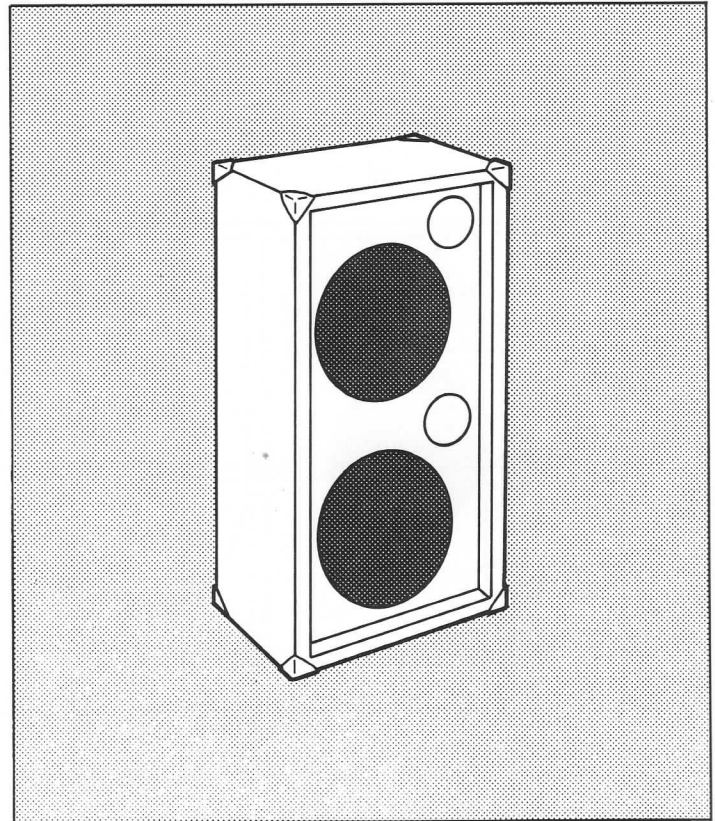
Simple and straightforward.
Select Duct Dimensions to suit loudspeaker. Position and cut Horn opening to suit models selected.

MATERIALS

$\frac{2}{3}$ sheet of 18mm ($\frac{3}{4}$ ") Board 8' x 4' size (2438 x 1219).

VOLUME

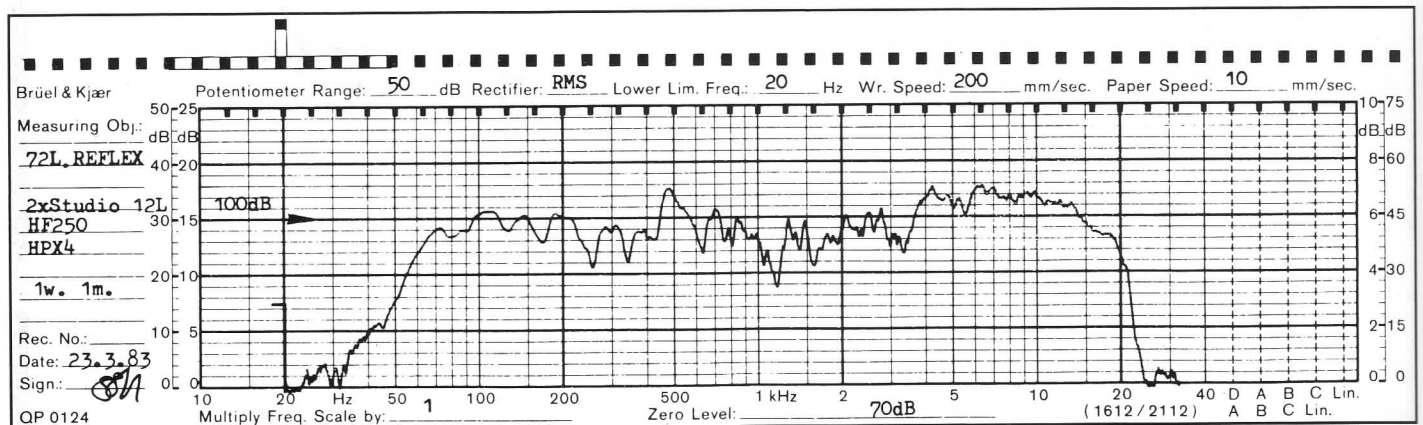
4400 cubic inches. 72 Litres.

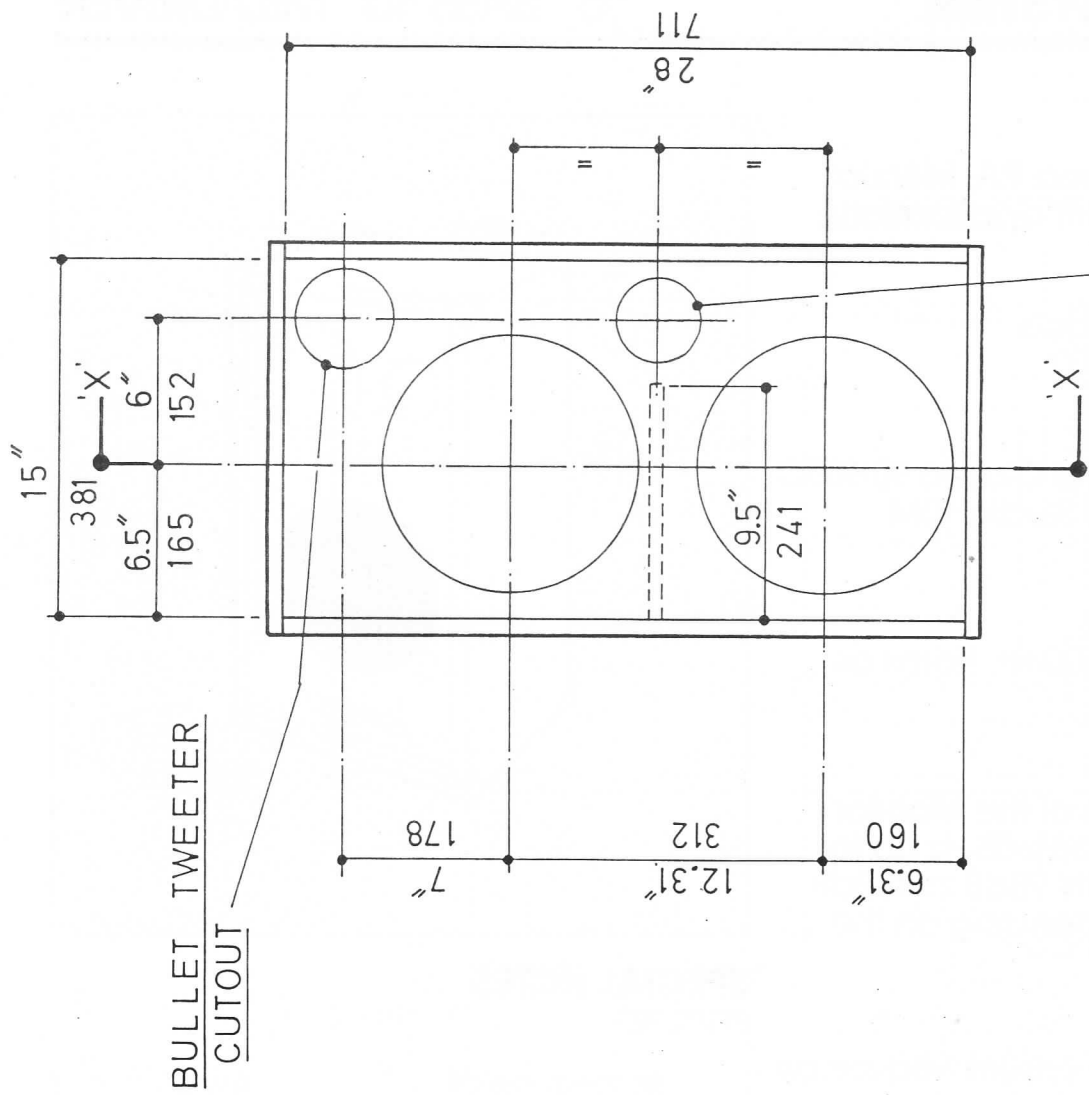


SPECIAL NOTES

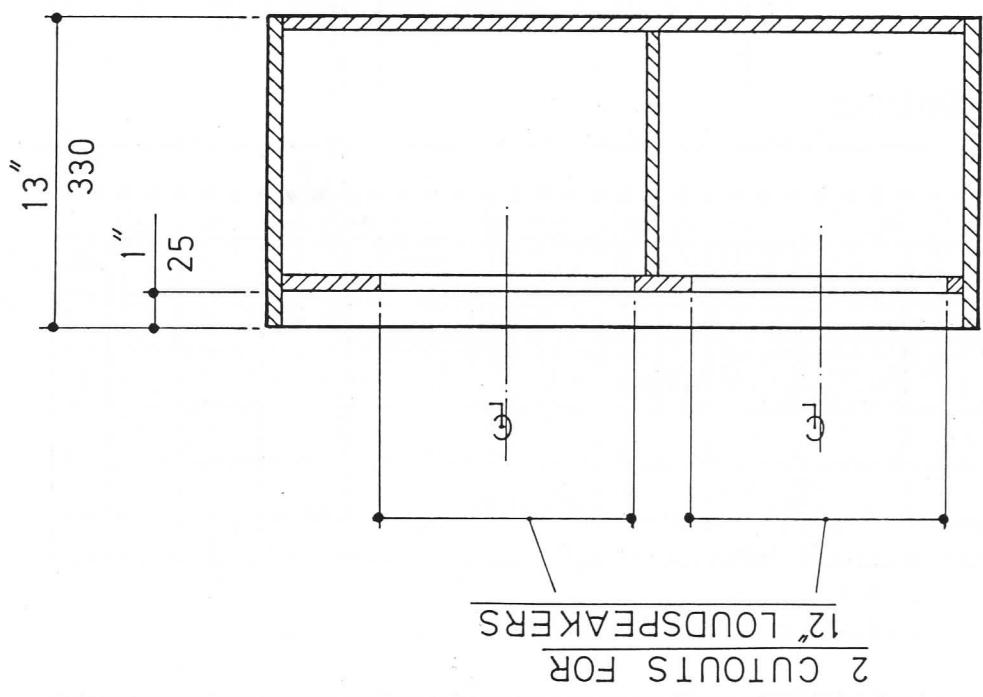
PORT SIZE

Resonance of Loudspeaker		Dim. 'A'
50 Hz		3.9"
55 Hz		4.1"
60 Hz		4.75"
70 Hz	2 ports	4.375"
75 Hz	2 ports	5"





PORT 'A' DIA



SECTION 'X-X'