

ANGLED 2 x 12" OR MID/HIGH CABINET MODULAR SYSTEM

APPLICATIONS

An angled 2 x 12" full range 2 way system for Modular stacking as required, doubling as a Mid/High cabinet in a 3 way system in P.A. and Discotheque systems.

LOUDSPEAKERS

Classic 12/80 C, 12/100 C, 12/150 C.
Crescendo 12/80.
Studio 12 L, 12 B or 12 G.
HF 250 with HP X 4 Crossover
J 44's with HP X 2 Crossover
ST 5020 with HP X 6 Crossover

PERFORMANCE

From 45 Hz to 20 kHz with studio 12B & HF 250 of very good quality full range sound. Sensitivity Mid-High section up to 105 dB for 1 Watt, 1 Metre.

MULTIPLE USE

Can be used as a modular system in stacks.

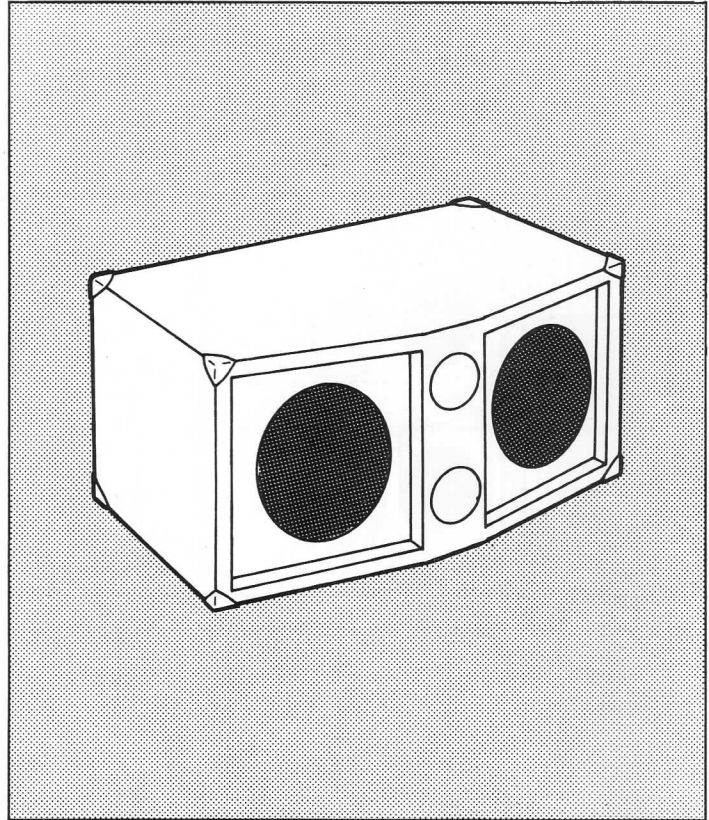
CONSTRUCTION

A very robust cabinet of a slightly complex design.

MATERIALS

$\frac{2}{3}$ sheets of 18mm ($\frac{3}{4}$ "') Board 8' x 4' size (2438 x 1219).

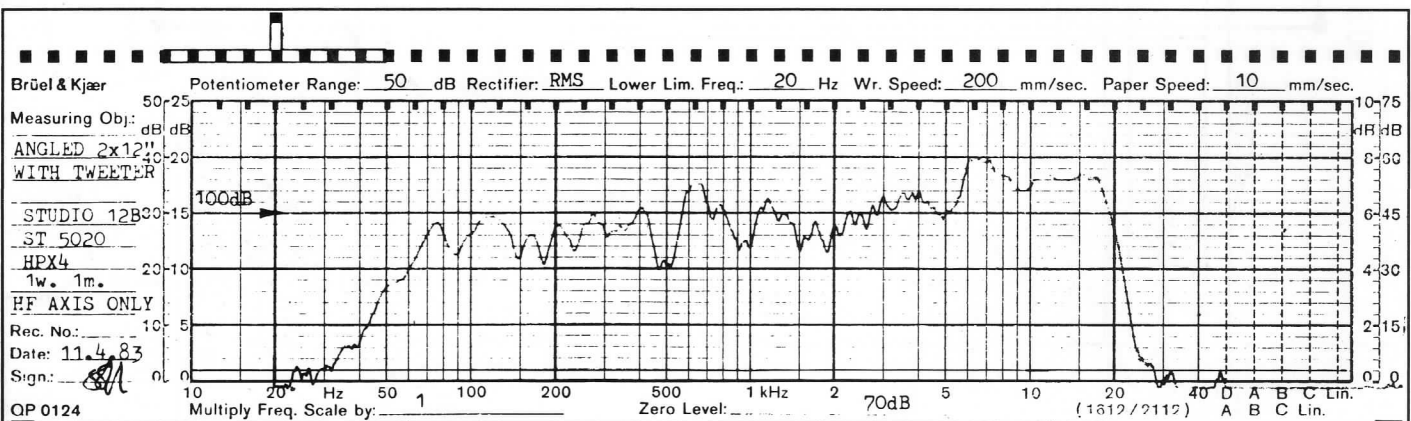
Designed for Loudspeaker Resonance of approximately 50 Hz.

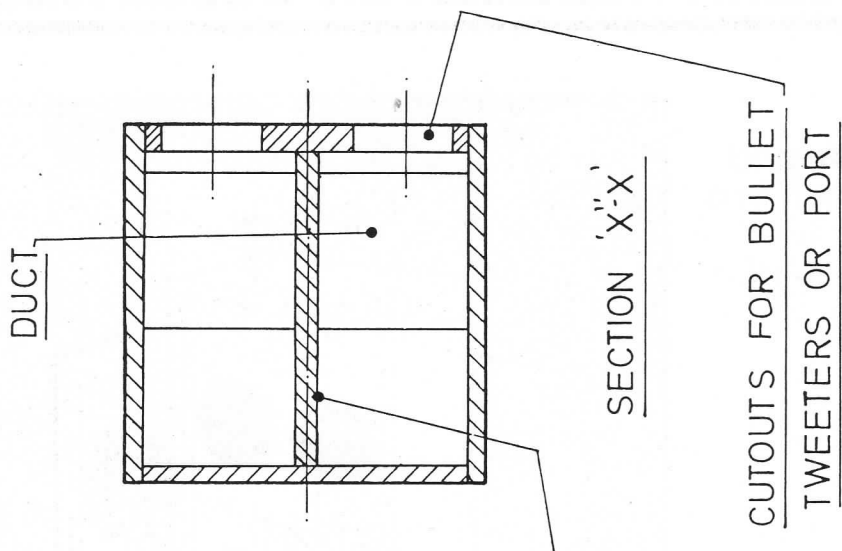
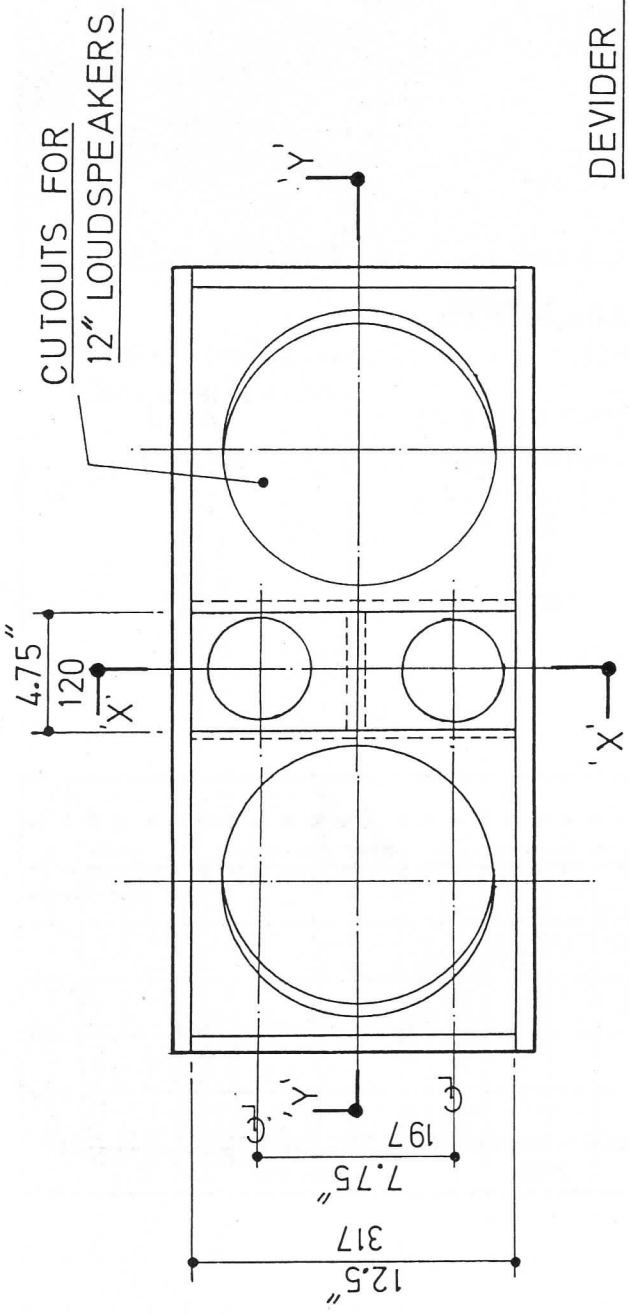


SPECIAL NOTES

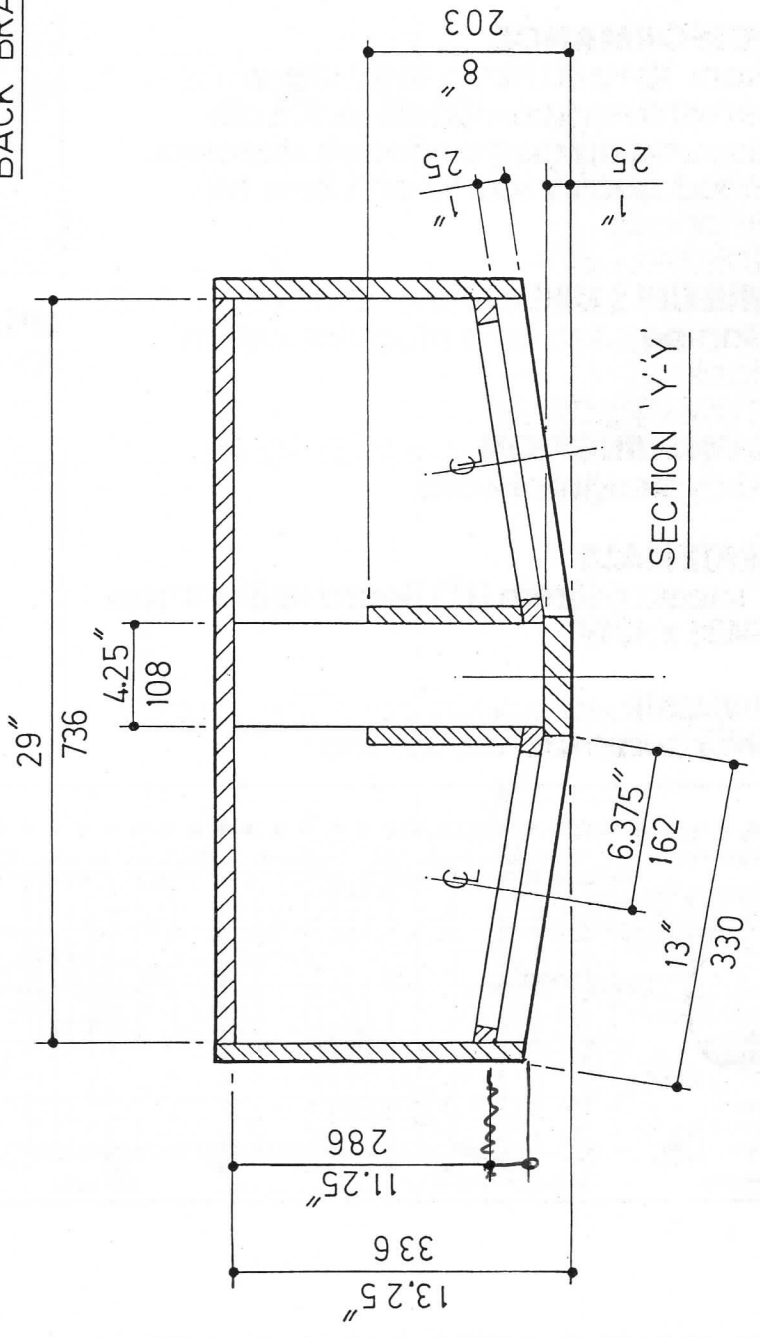
When used as a Mid-High cabinet the Reflex port may be used to house a further Bullet if required.

HP X 5 Crossover at 500 Hz can be used for Bass-Mid Crossover.





DEVIDER AND BACK BRACE



4 x 10 FULL RANGE SYSTEM

SUITABLE FOR MODULAR USE

APPLICATIONS

A full range cabinet for Disco, PA, and musical instruments. A lot of punch in a small cabinet.

LOUDSPEAKERS

Classic 10C's to Classic 10/100C
Crescendo: 10/100E.
Studio: 10 M or G.

HORNS

J44 with HP x 2 crossover
HF250 with HP X 4 crossover
ST 50 20 with HP X 6 crossover

PERFORMANCE

From 70 Hz-80 Hz up to 20 kHz at sensitivities from 100 dB to 105 dB depending on the models selected. Good quality sound with Bass/Mid Emphasis.

MULTIPLE USE

Can be used as a modular system stack.

CONSTRUCTION

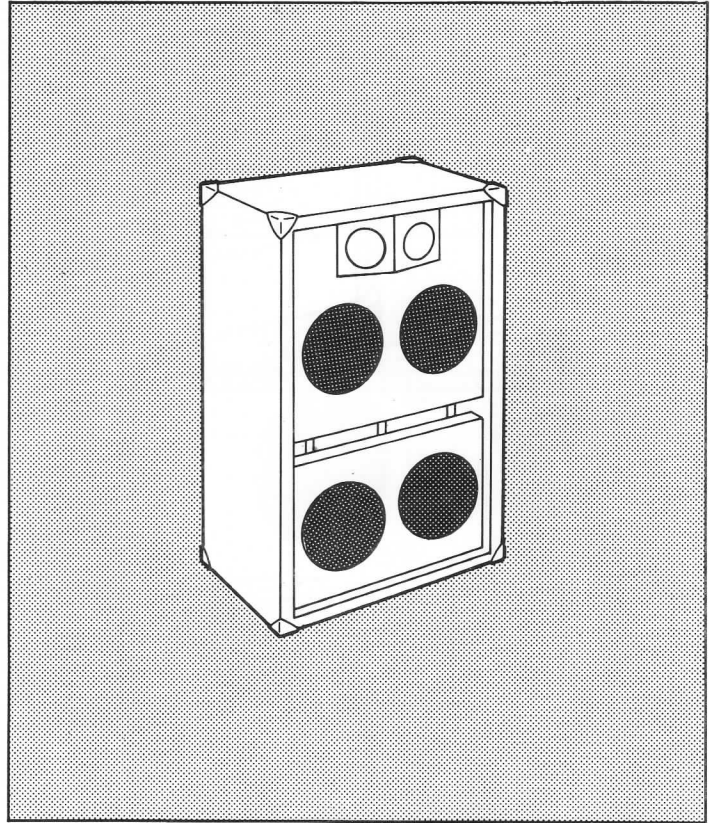
Fairly straightforward.

MATERIALS

1 sheet of 18mm ($\frac{3}{4}$ ") Board in 8' x 4' size (2438 x 1219).

VOLUME

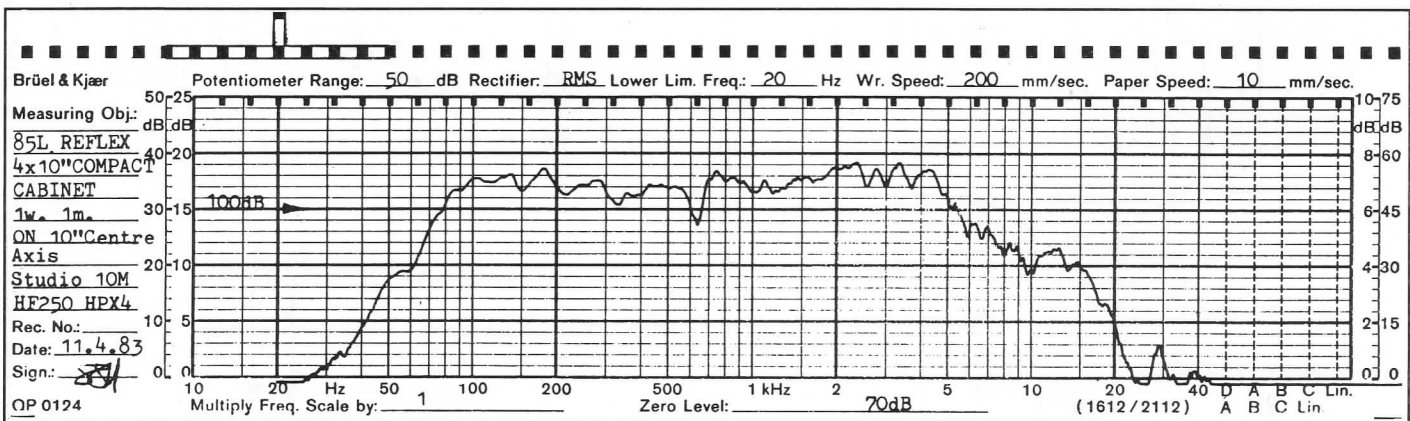
5355 cubic inches. 85 Litres

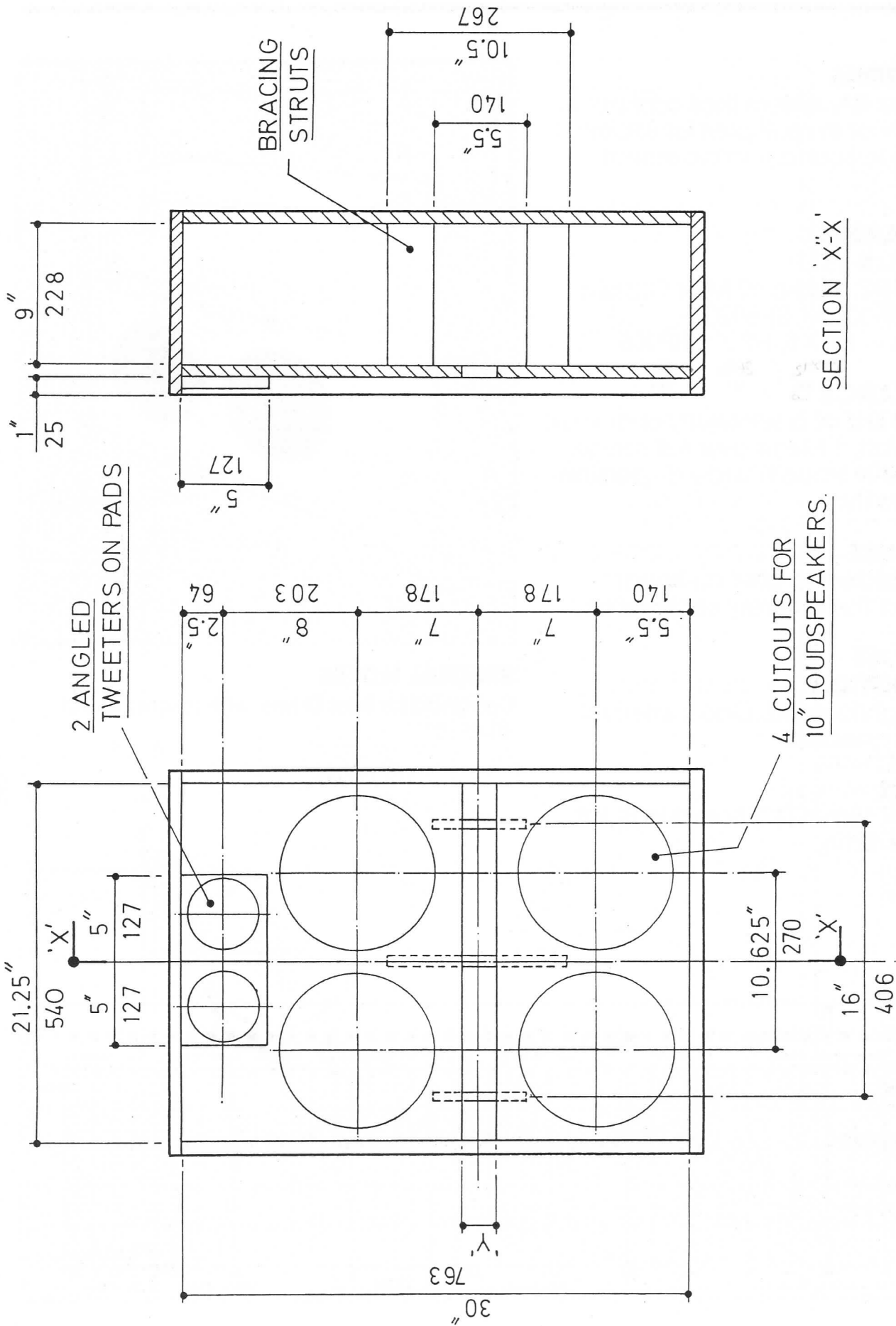


SPECIAL NOTES

PORT SIZE.

Resonance of Loudspeaker	Area
60 Hz	1"
70 Hz	1 $\frac{3}{4}$ "
75 Hz	2 $\frac{3}{8}$ "
80 Hz	2 $\frac{3}{4}$ "





SECTION 'X'-X

APPLICATIONS

A full range P.A. system that can be used singly or in multiples for P.A. or Discotheque sound reinforcement systems.

LOUDSPEAKERS

Studio 15 B or 15 L.
Colossus 15 E, Studio 10 M or Classic 10/100 C, HF 100 M, ST 5020.
Crossovers — HP X5, HP X1, HP X6

PERFORMANCE
40 Hz to 20 kHz at a sensitivity of at least 102 dB 1 Watt, 1 Metre over full range. Exceptionally smooth wide dispersion of high quality.

500Hz $\frac{H1}{L0}$ 3kHz $\frac{H1}{H1}$ 5K $\frac{SK}{H1}$

MULTIPLE USE

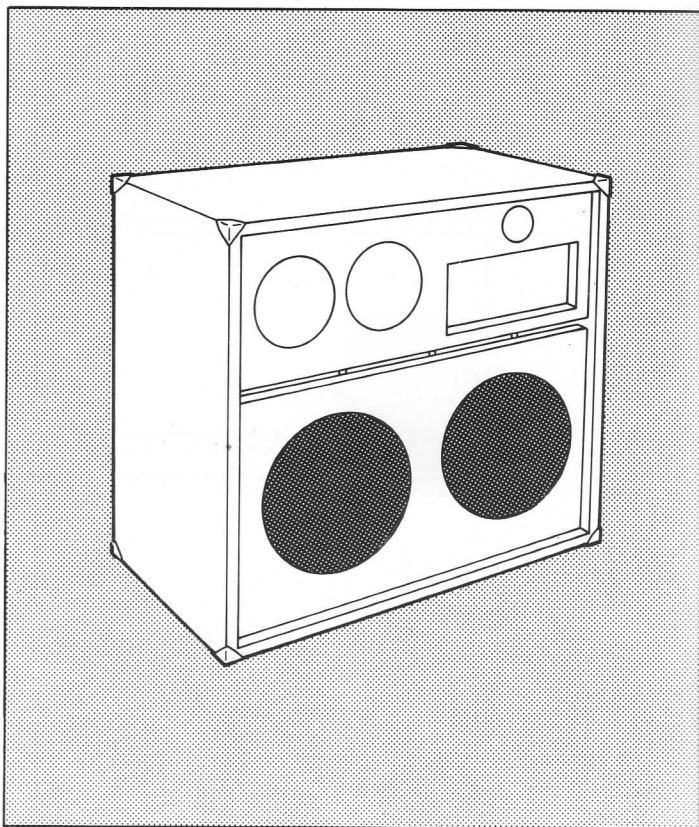
Can be stacked to give co-linear coupling of the different sections as required.

CONSTRUCTION

Fairly straightforward. Good internal bracing is needed.

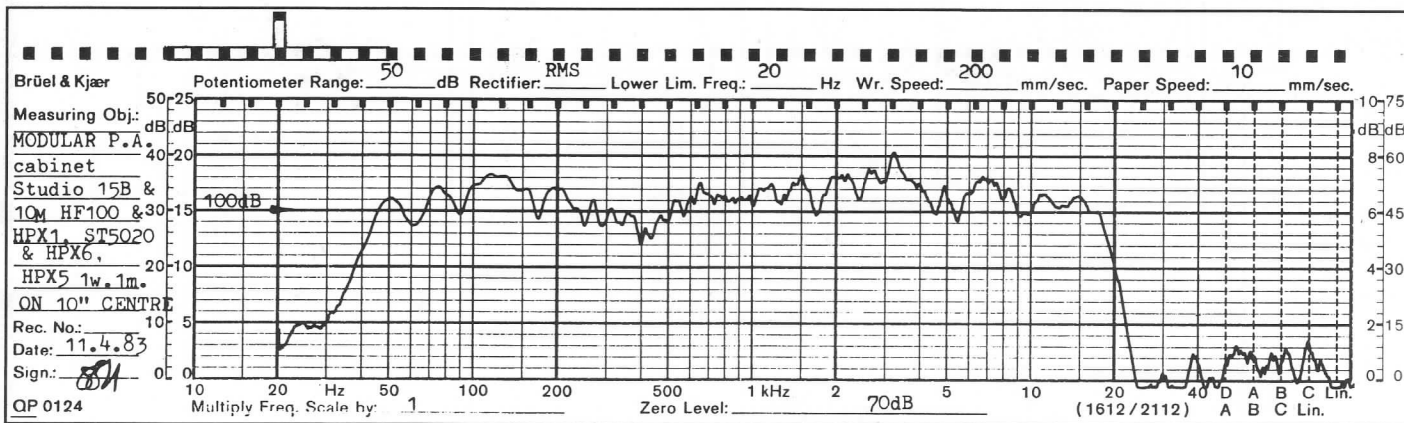
MATERIALS

1½ sheets of 18mm (¾") Board in 8' x 4' size (2438 x 1219).



SPECIAL NOTES

Designed for Bass Drivers with resonance of 40-45 Hz.



APPLICATIONS

15" Bass bin for use with mid-high cabinets for P.A. systems or musical instrument applications.

LOUDSPEAKERS

Classic 15/10 C, 15/150C, 15/200 C.
Crescendo Colossus 15 E.
Studio 15 B or L.

PERFORMANCE

From 48 Hz to 500 Hz at a sensitivity of at least 100 dB for 1 Watt, 1 Metre of high power fundamental.

MULTIPLE USE

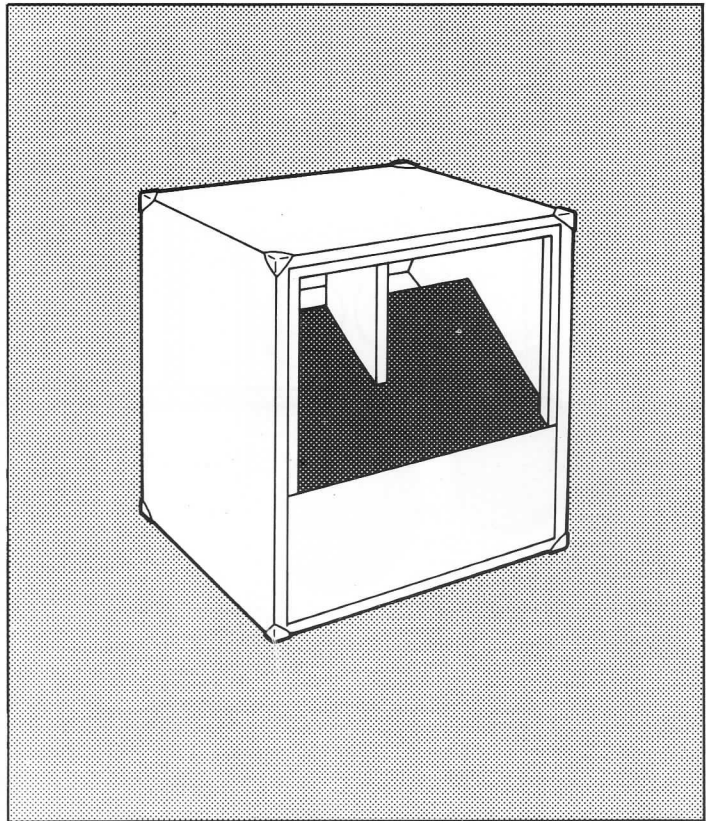
Bass performance is improved by stacking in multiples e.g. 4 cabinets — 38 Hz-500 Hz.

CONSTRUCTION

Fairly complex — Mark out side panels as section 'xx' to aid assembly. Panels need mitreing accurately.

MATERIALS

2 sheets of 18mm ($\frac{3}{4}$ ") Board in 8' x 4' size (2438 x 1219).



SPECIAL NOTES

Suited for Long throw applications.
Use with HP X5 crossover.

