

## APPLICATIONS

18" Bass bin for use with mid-high cabinets for P.A. systems or musical instrument applications.

## LOUDSPEAKERS

Classic 18's or 18c's.  
Specialist Bass 30.  
Crescendo Colossus 18E.

## PERFORMANCE

From 50 Hz to 500 Hz at a sensitivity of at least 102 dB for 1 Watt, 1 Metre of high power fundamental bass.

## MULTIPLE USE

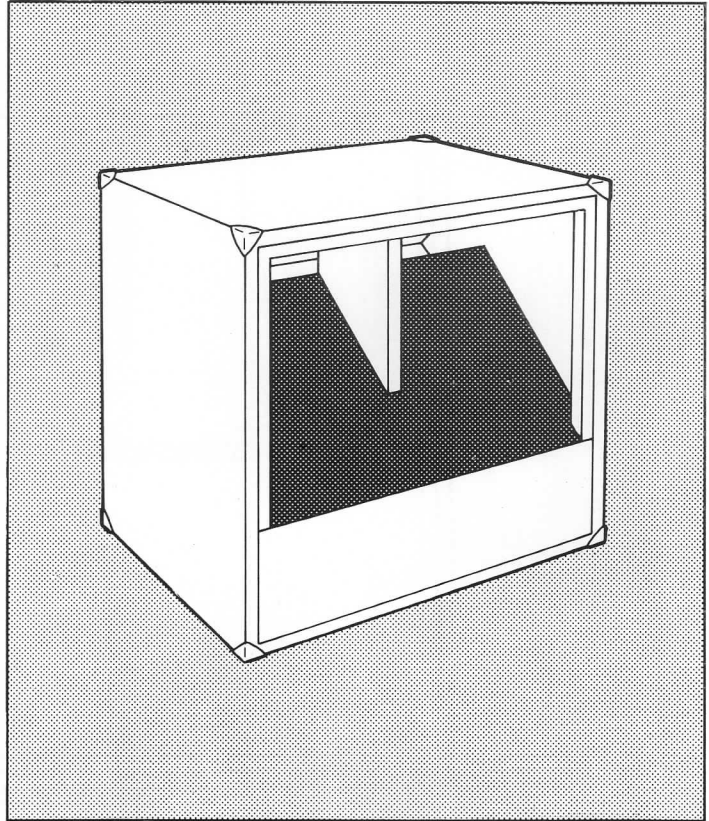
Bass performance is improved by stacking in multiples e.g. 2 cabinets — 42 Hz-500 Hz.

## CONSTRUCTION

Fairly complex — Mark out side panels as section 'xx' to aid assembly. Panels need mitreing accurately.

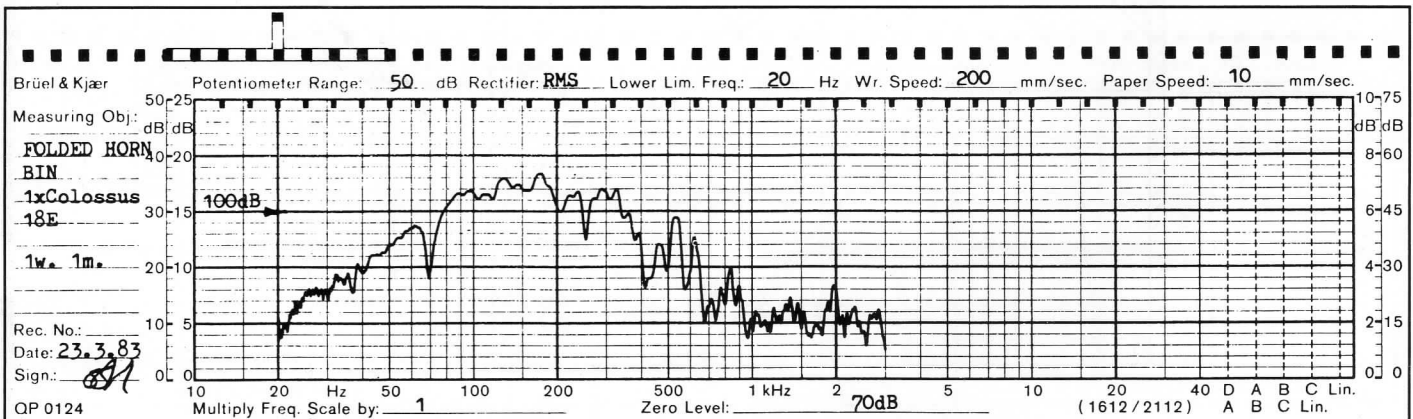
## MATERIALS

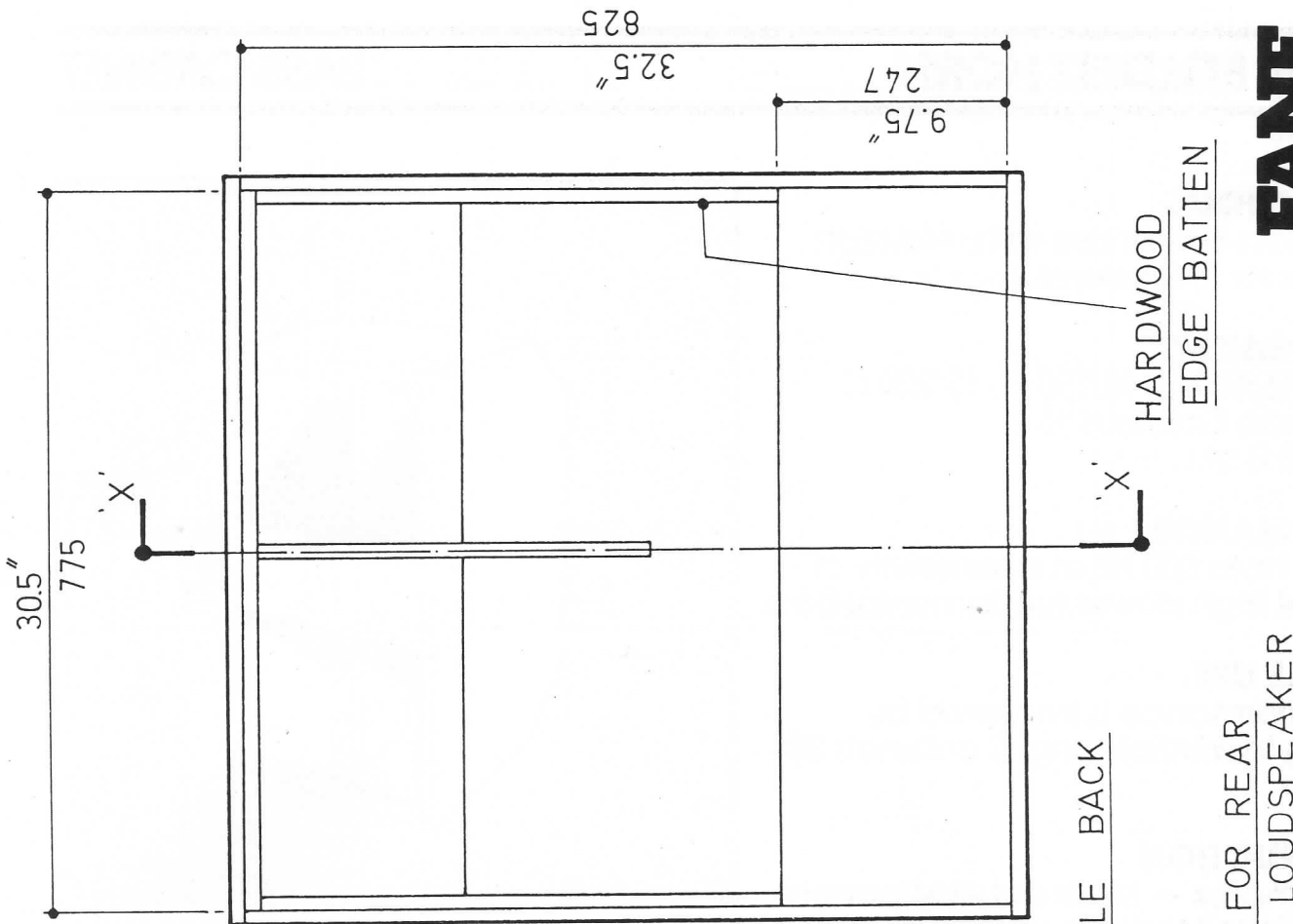
2 $\frac{1}{3}$  sheets of 18mm ( $\frac{3}{4}$ " ) Board in 8' x 4' sheets (2438 x 1219).



## SPECIAL NOTES

Suited for Long throw applications.  
Use with HP X5 crossover.

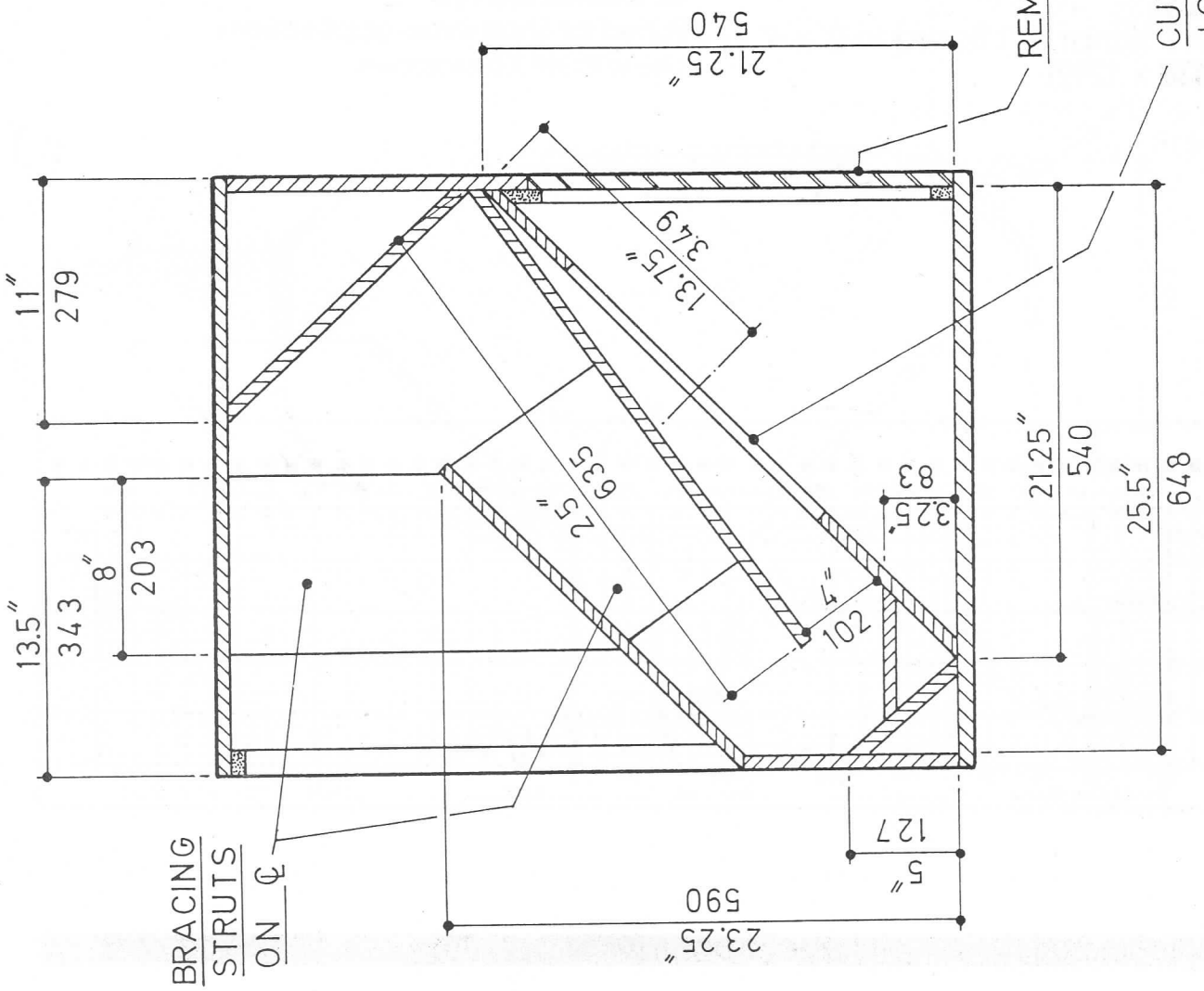




HARDWOOD  
EDGE BATTEN

REMOVABLE BACK

CUTOUT FOR REAR  
LOADED LOUDSPEAKER



BRACING  
STRUTS  
ON  $\phi$

SECTION 'X-X'

## APPLICATIONS

2 x 15" Bass bin for use with mid-high cabinets for P.A. systems.

## LOUDSPEAKERS

Classic 15/100 C, 15/150 C, 15/200 C.  
Crescendo Colossus 15 E.  
Studio 15 B or L.

## PERFORMANCE

From 55 Hz to 500 Hz at a sensitivity of 103 dB of high power fundamental Bass.

## MULTIPLE USE

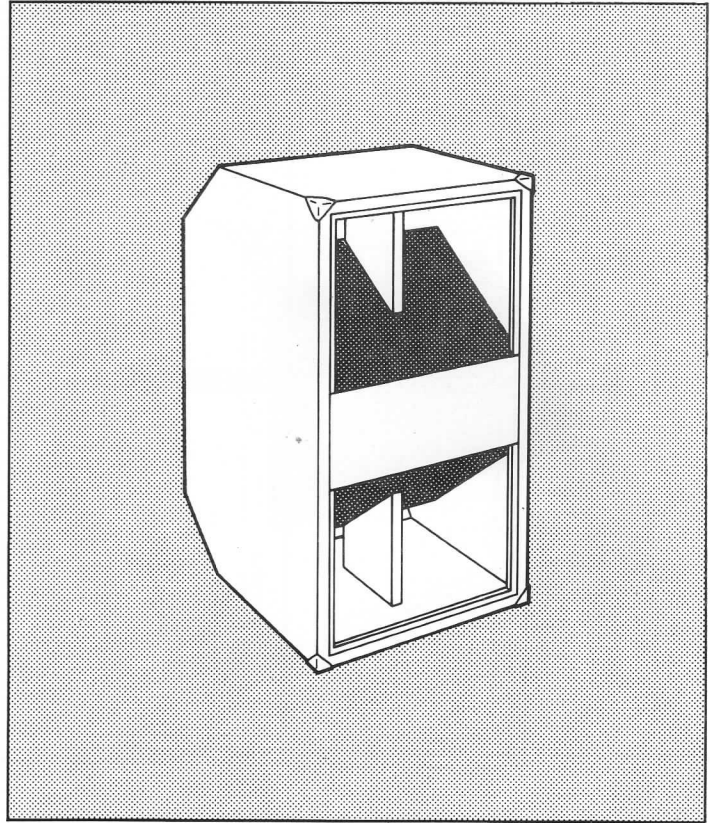
Bass performance is improved by stacking in multiples eg. 2 cabinets 38 Hz-500 Hz.

## CONSTRUCTION

Very complex — Mark out side panels as section 'xx' to aid assembly. Panels need mitring accurately.

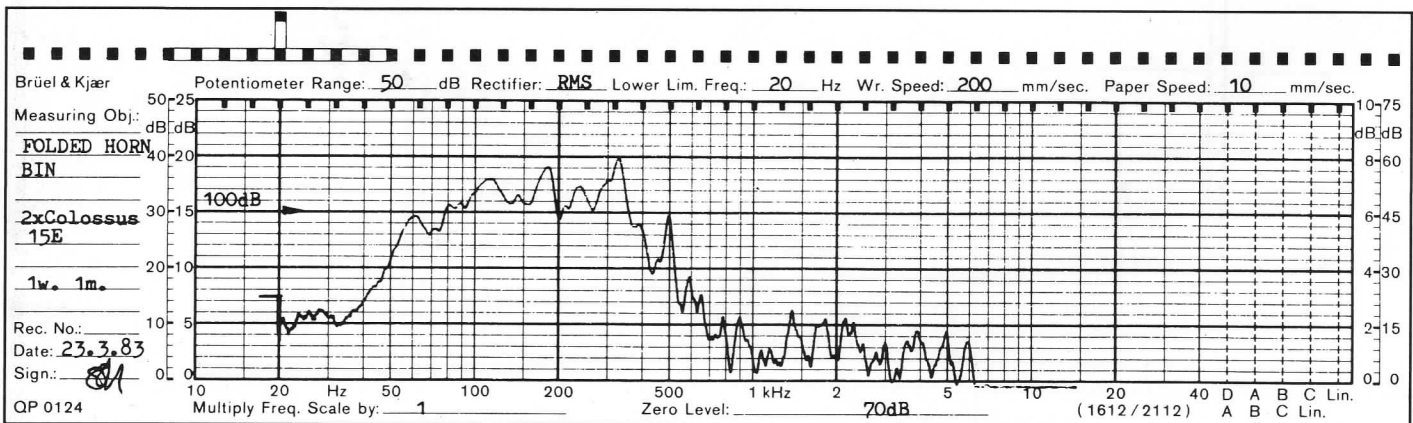
## MATERIALS

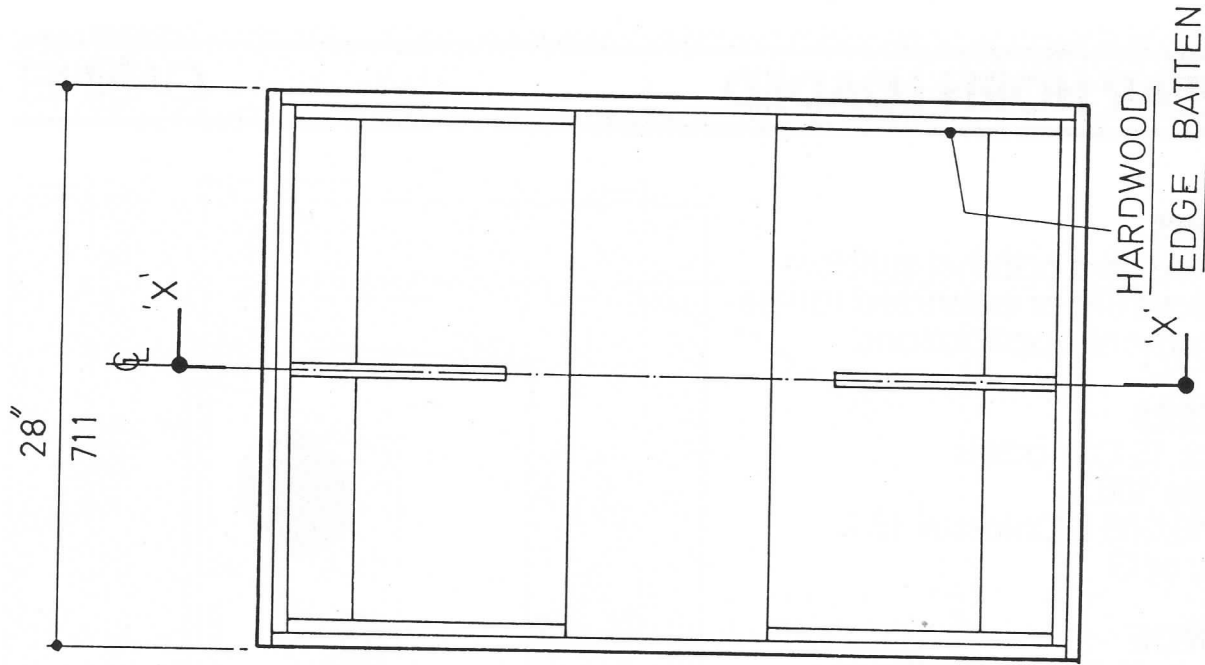
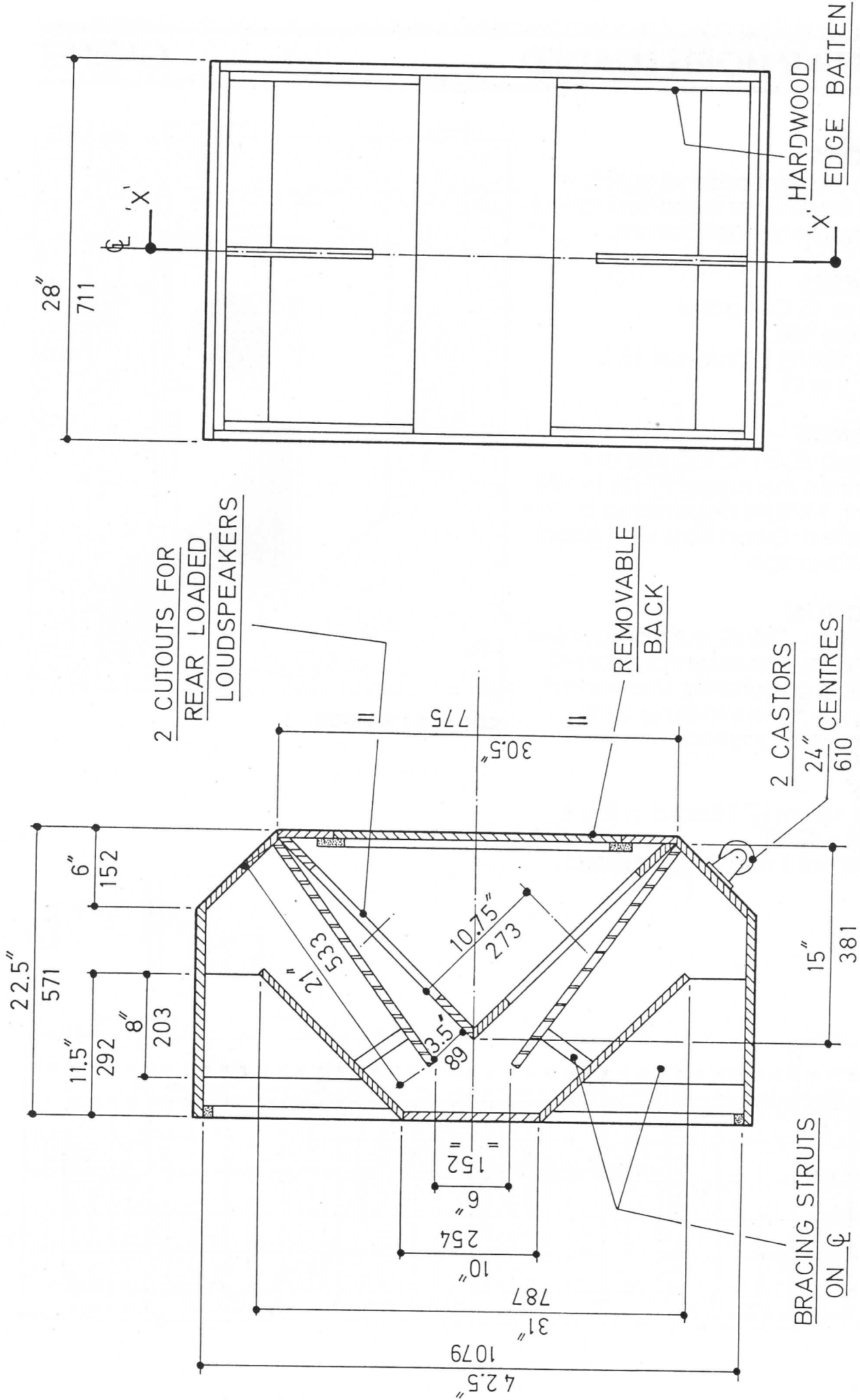
2 1/3 sheets of 18mm (3/4") Board in 8' x 4' sheets (2438 x 1219).



## SPECIAL NOTES

Suited for Short throw applications.  
Use with HP X5 crossover.





SECTION 'X-X'

## APPLICATIONS

A Rear Horn loaded cabinet suitable for use as a Bass Bin or extended range musical instrument applications.

## LOUDSPEAKERS

Classic 15's or 15 C models.  
Specialist Bass 100.  
Crescendo 15/200 E Colossus 15 E.  
Studio 15 B, L or G.

## PERFORMANCE

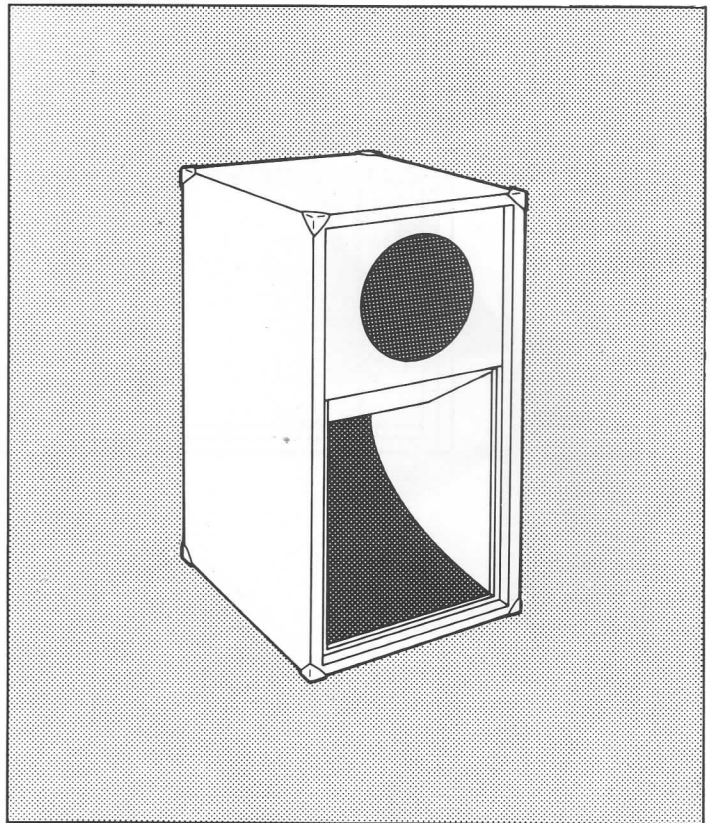
From between 40-50 Hz to 5 KHz at a sensitivity within the range 97 dB to 104 dB for 1 Watt, 1 Metre depending on the model selected. Good Bass with good mid-band coverage.

## CONSTRUCTION

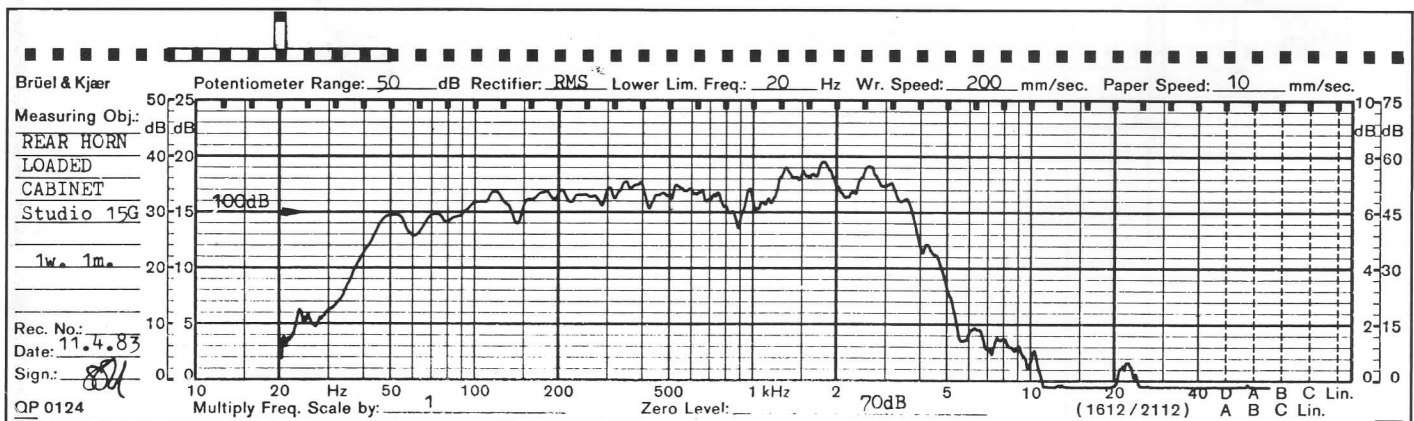
Fairly complex — Mark out side panels as section 'xx' to aid assembly. Panels need mitreing accurately. The curved panel is made by laminating 2 thin sheets in the final position.

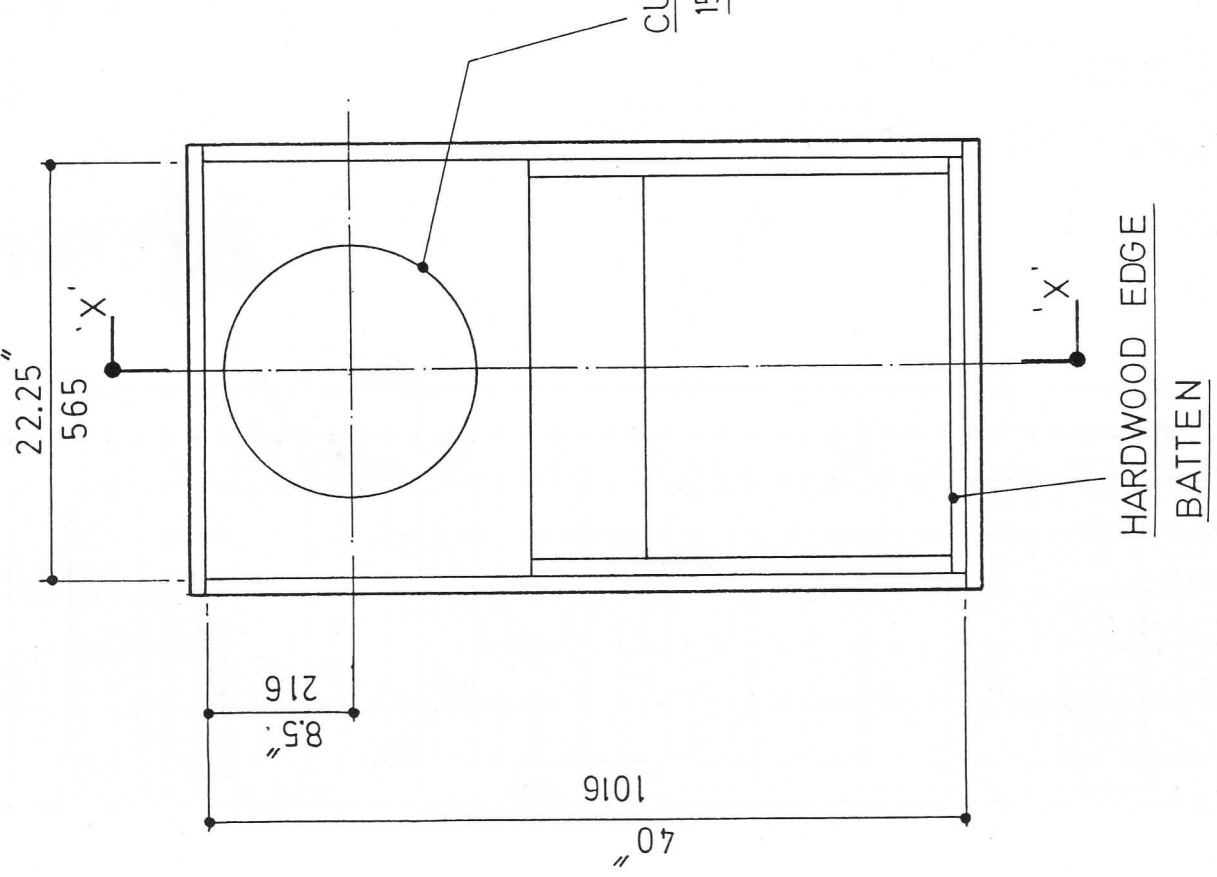
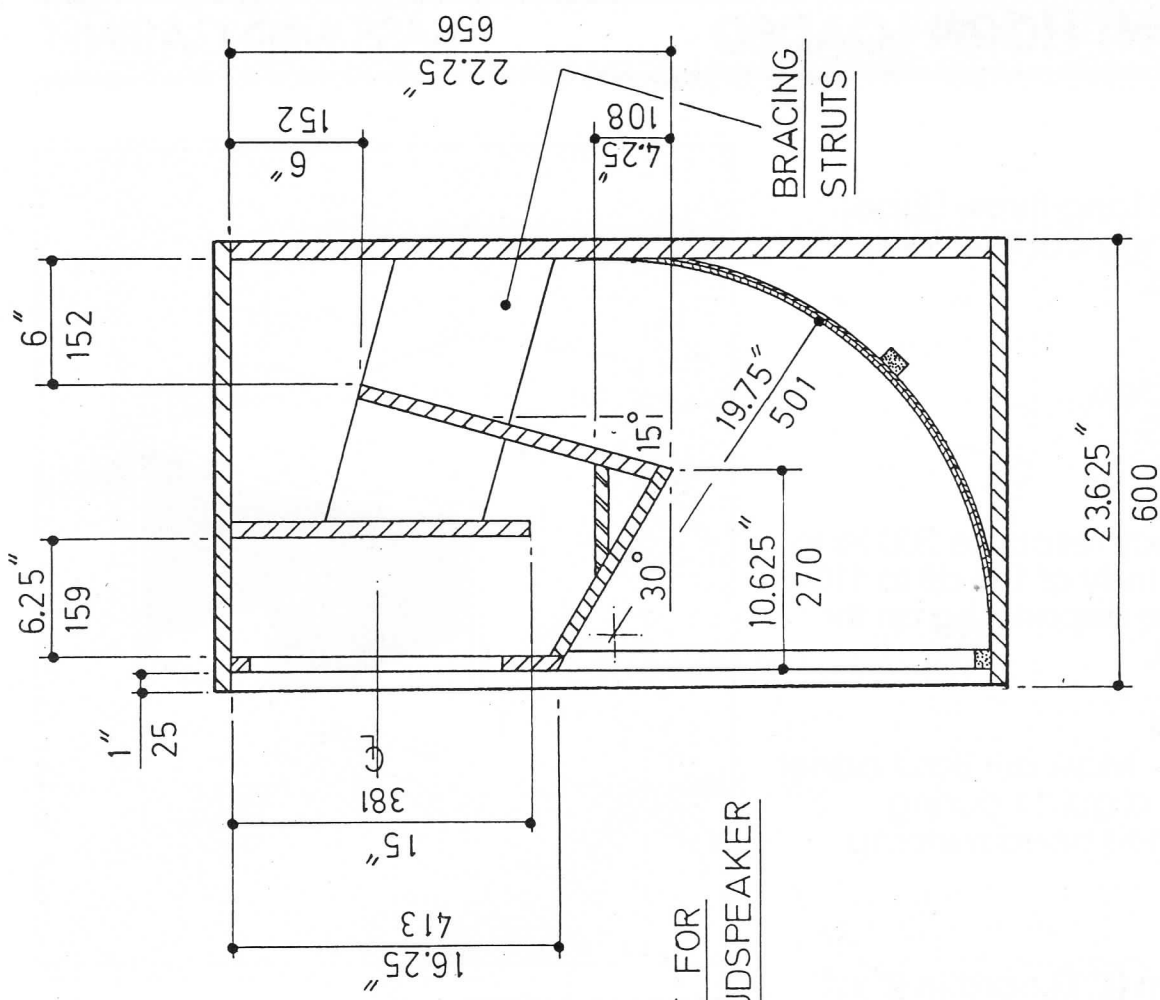
## MATERIALS

1½ sheets of 18mm (¾") Board in 8' x 4' sheets (2438 x 1219).  
2 x 37½" x 24" of 3 mm (⅛") plyboard.



## SPECIAL NOTES





# 2 x 12" FRONT HORN LOADED

# BASS/MID CABINET

## APPLICATIONS

An angled 2 x 12 Long throw Upper Bass/Low mid-range cabinet for use in Multiway Systems.

## LOUDSPEAKERS

Classic 12 C models.  
Studio 12 B, L or G.

## PERFORMANCE

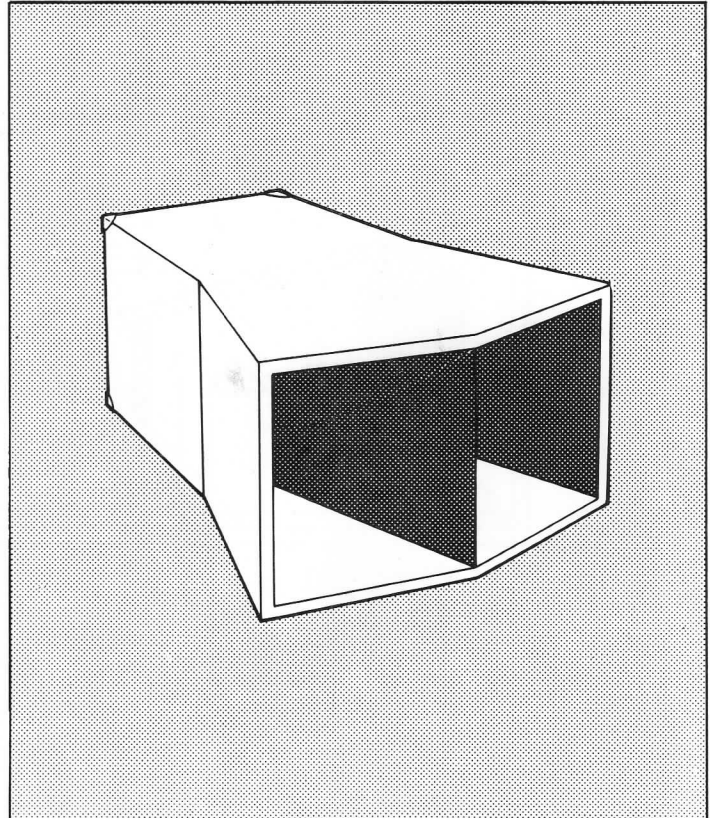
Useable frequency response 200 Hz to 1.5 KHz at a sensitivity of 104 dB to 110 dB for 1 Watt, 1 Metre depending on the models selected.

## CONSTRUCTION

Fairly complex — Mark out Base panel as section 'xx' as a guide during construction. Panels need mitreing accurately.

## MATERIALS

1  $\frac{1}{5}$  sheets of 18mm ( $\frac{3}{4}$ " ) Board in 8' x 4' sheets (2438 x 1219).



## SPECIAL NOTES

Suited for Longthrow applications.

