

APPLICATIONS

A Reflexed Longthrow Bass Bin or Upper Bass/Low mid Cabinet for use in Multiway Systems.

LOUDSPEAKERS

Classic 15's or 15 C models.
Specialist Bass 100.
Crescendo 15/200 E, Colossus 15 E.
Studio 15 B, L or G.

PERFORMANCE

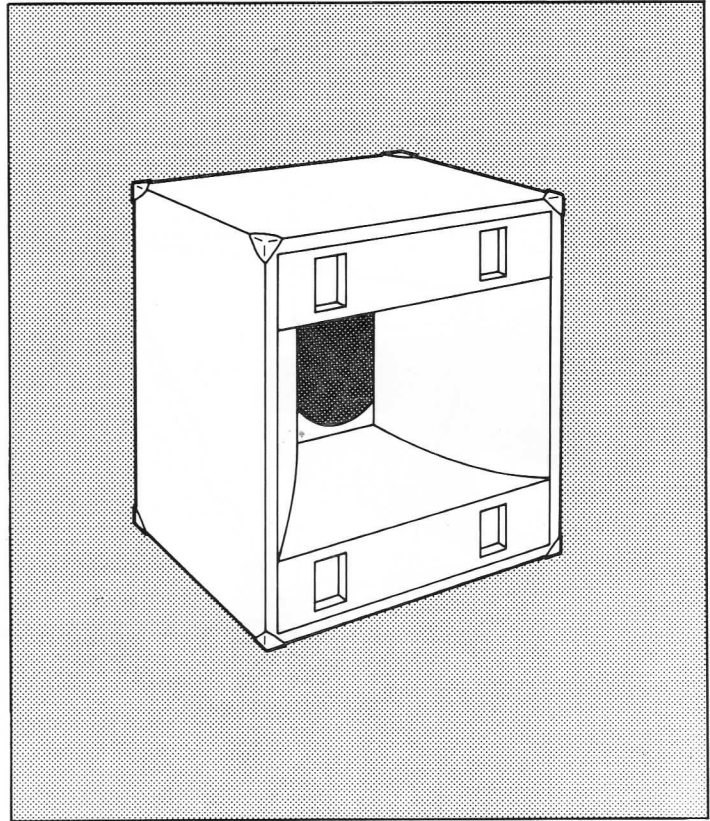
From between 40-50 Hz to 5 KHz at a sensitivity within the range 97 dB-104 dB for 1 Watt, 1 Metre depending on the model selected.
Good Bass with good longthrow mid-band coverage.

CONSTRUCTION

Very complex. Panels need mitreing accurately. The curved panels are best laminated in position using several thin sheets of plywood.

MATERIALS

1 $\frac{1}{3}$ sheets of 18mm ($\frac{3}{4}$ ") Board in 8' x 4' size (2438 x 1219).
2 x 24" x 32" 3 mm ($\frac{1}{8}$ ") plyboard.



SPECIAL NOTES

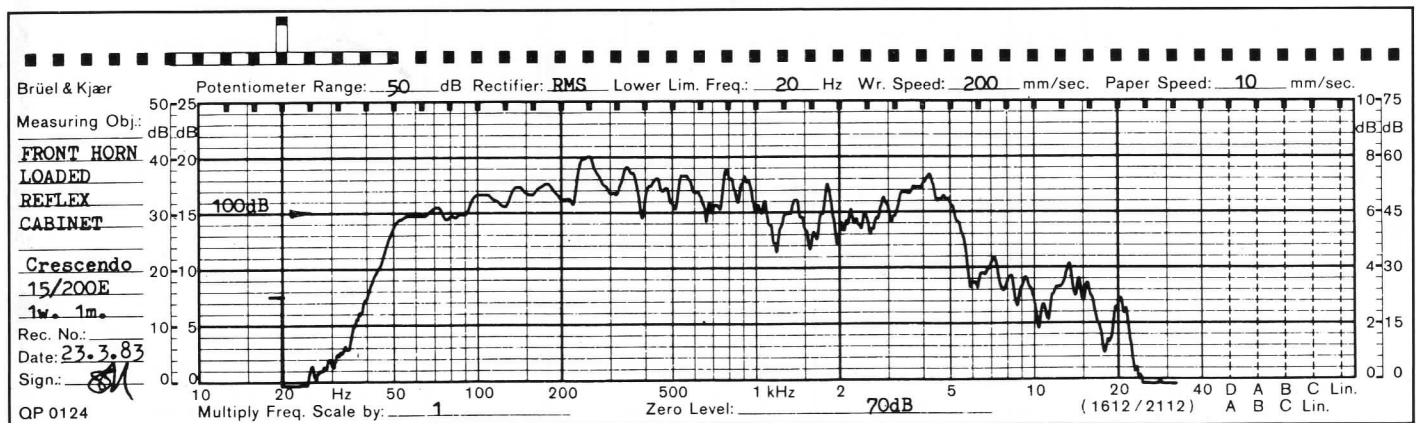
PORT SIZE

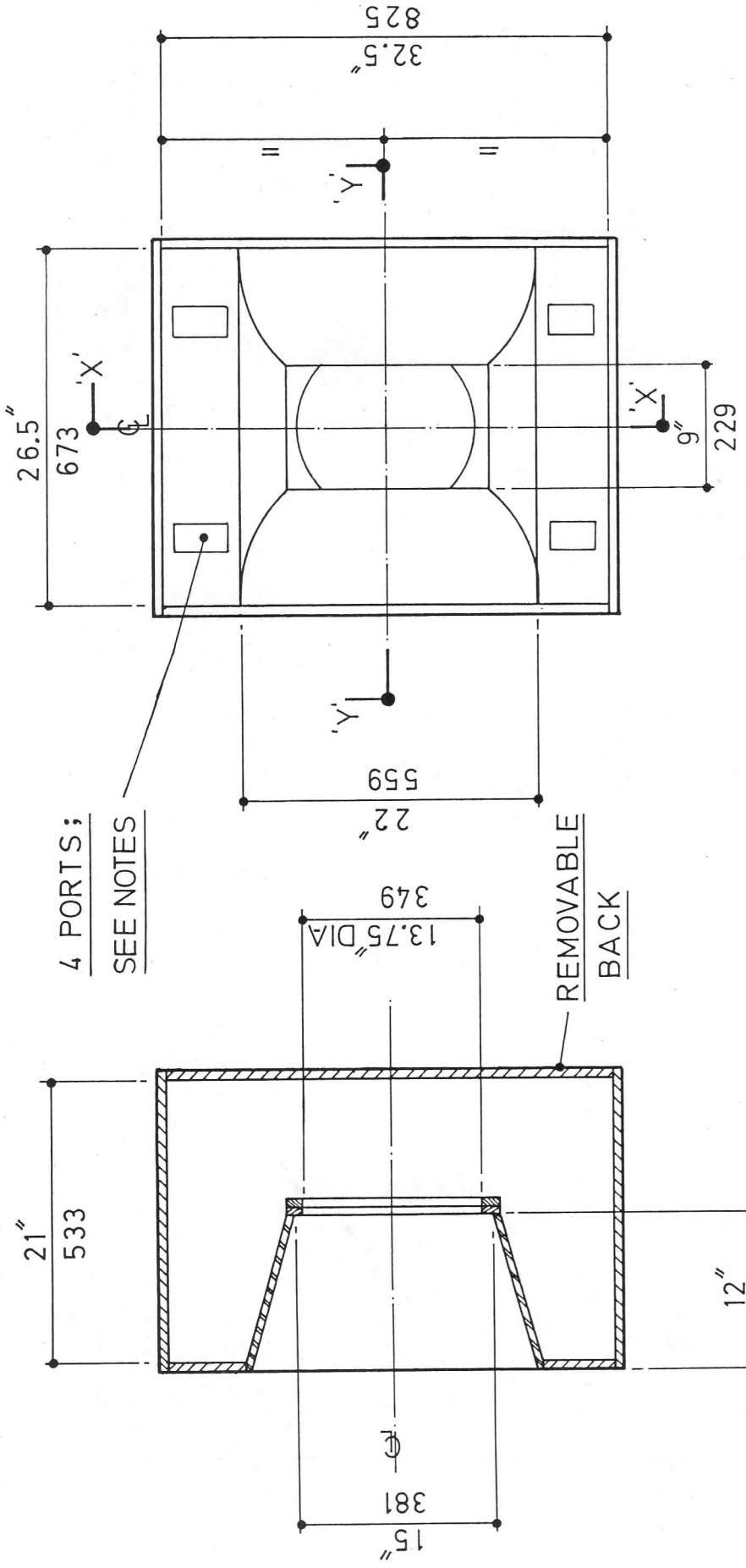
Resonance of Loudspeaker

40 Hz
45 Hz
55 Hz
60 Hz
65 Hz
70 Hz

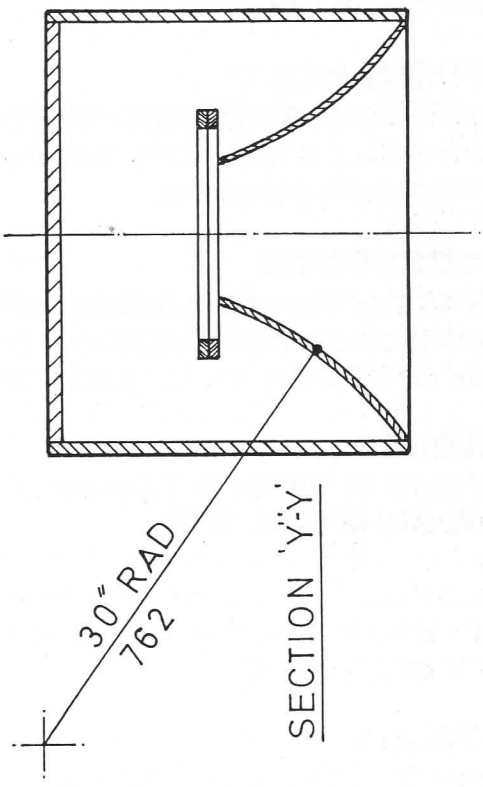
Total Area of Port

15 square inches
24 square inches
36 square inches
50 square inches
68 square inches
88 square inches





4 PORTS;
 SEE NOTES



SECTION 'X-X'

APPLICATIONS

An angled 2 x 12 short-throw mid-range cabinet for use in multiway systems.

LOUDSPEAKERS

Classic 12's or 12 C models.
Studio 12 L, B or G.

PERFORMANCE

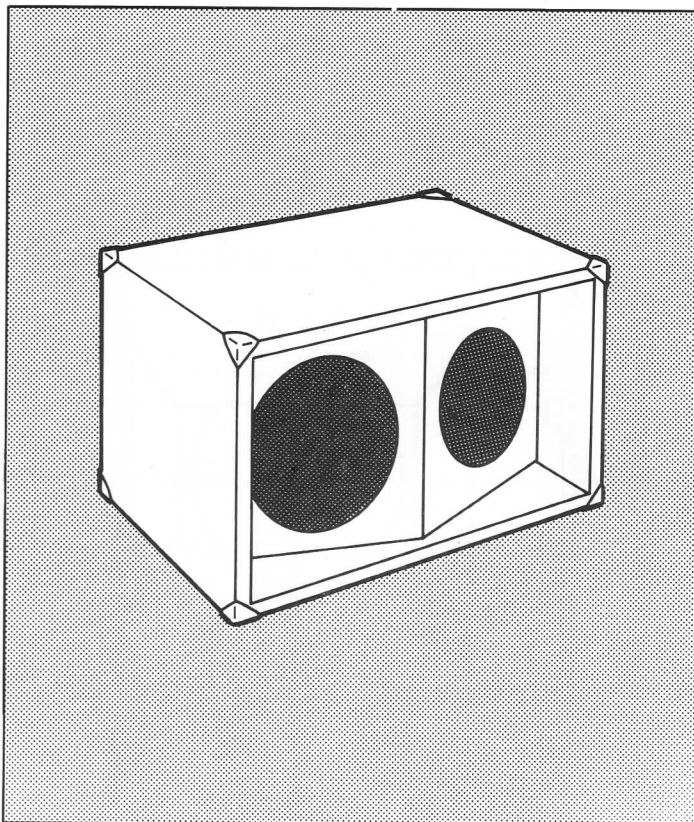
Useable frequency response from 400 Hz to 5 KHz at a sensitivity relative to the loudspeakers selected.

CONSTRUCTION

Fairly straightforward. Some parts need mitring accurately. Mark our bottom panel as section 'xx' to guide assembly.

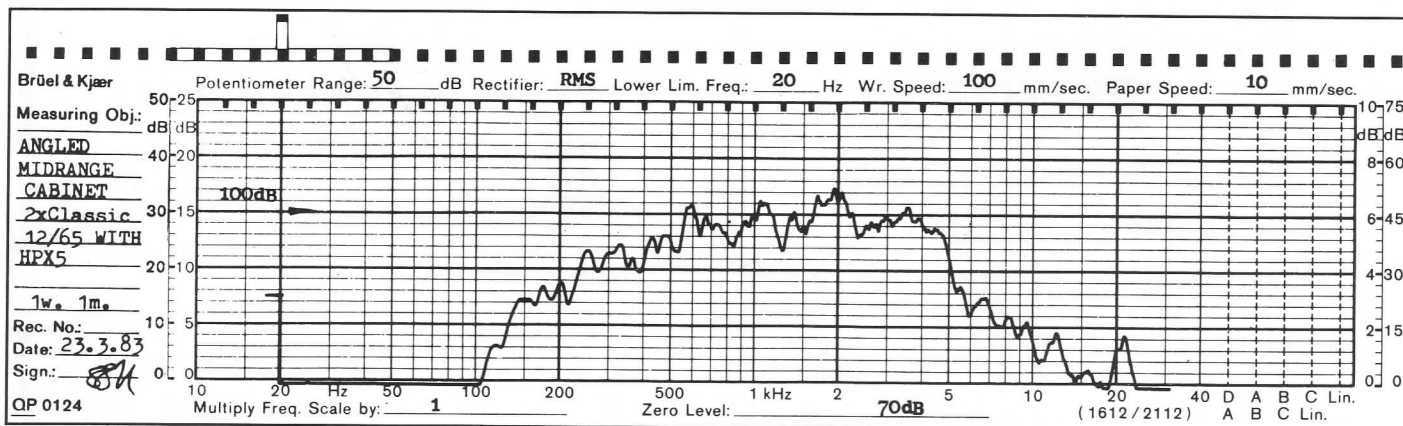
MATERIALS

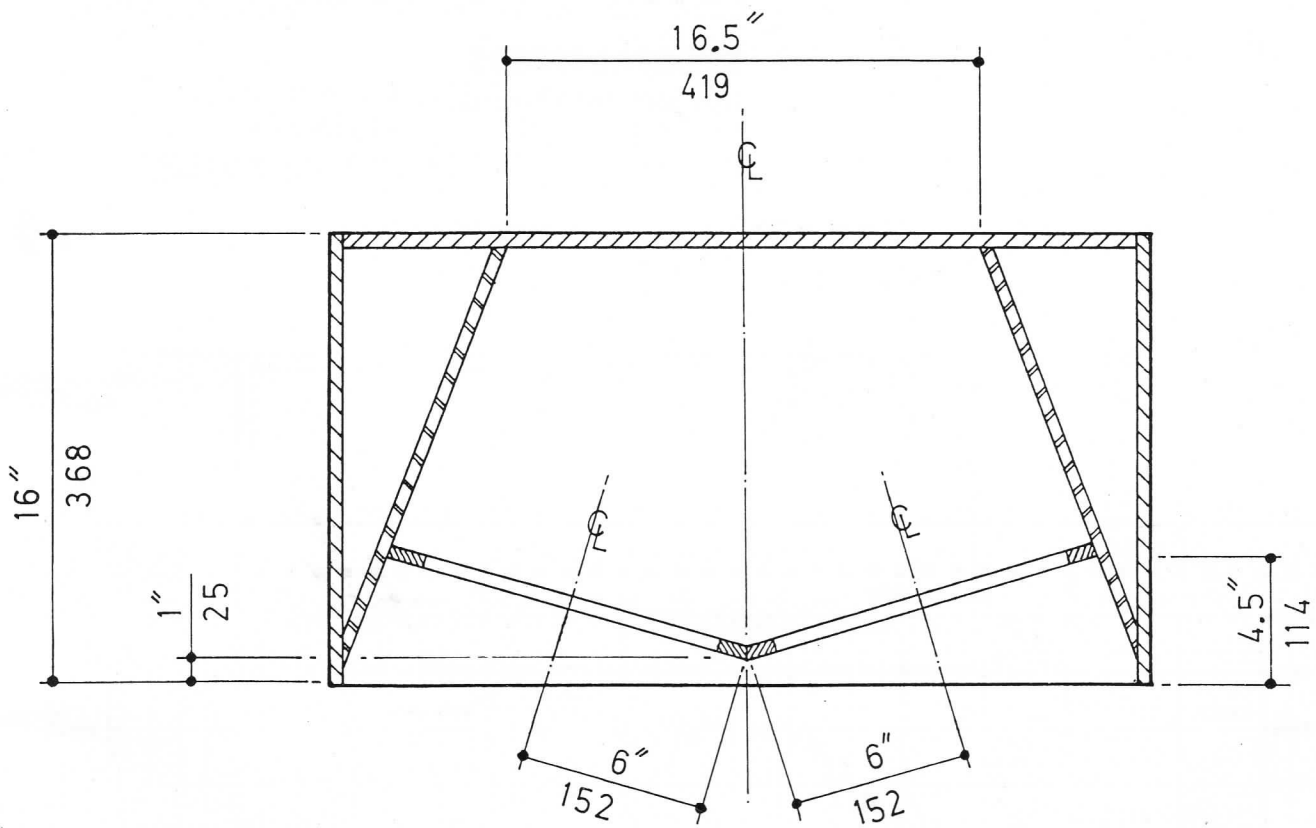
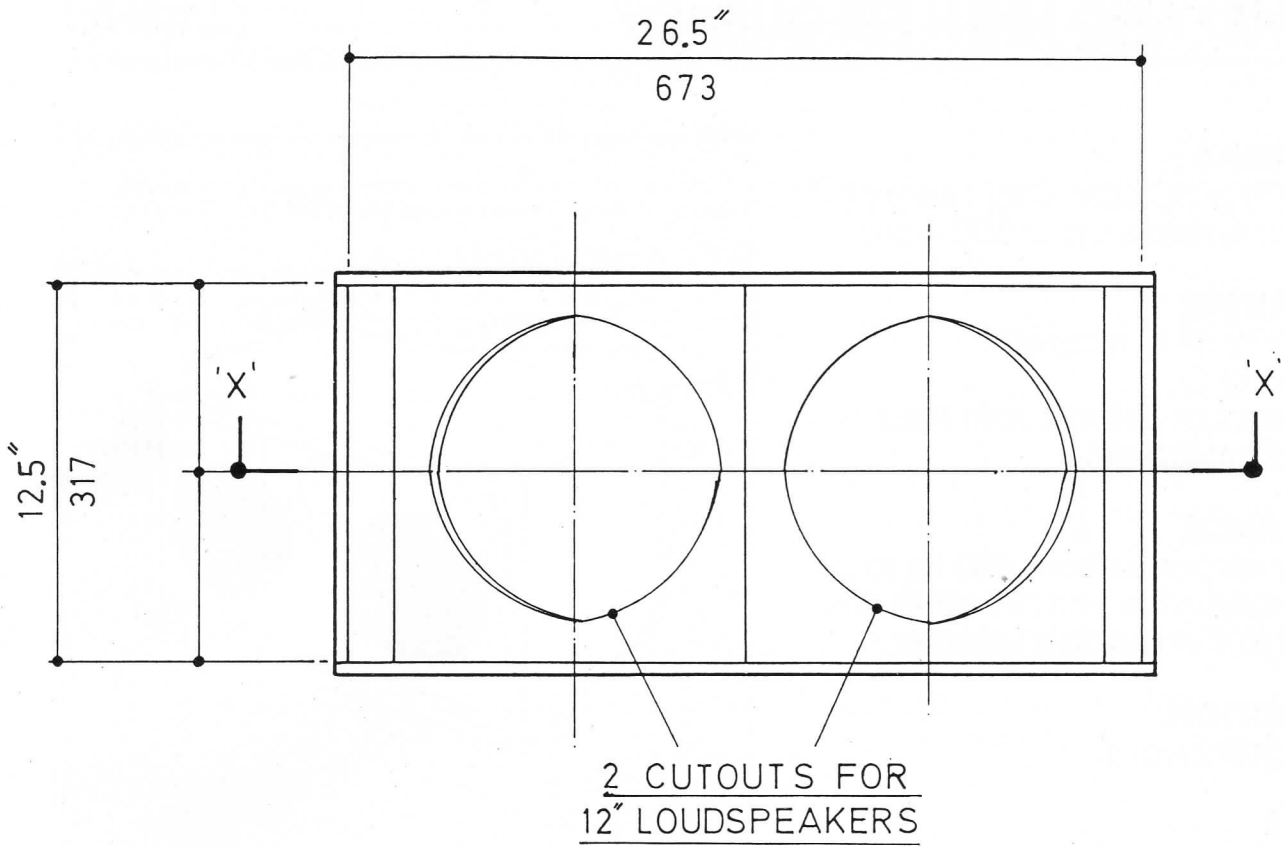
$\frac{8}{10}$ " sheets of 18mm ($\frac{3}{4}$ " Board of 8' x 4' sheets size (2438 x 1219).



SPECIAL NOTES

Use with HP X5. For the Studio Models an improvement in sound quality can be achieved by increasing the depth to 22 $\frac{1}{2}$ ".





SECTION 'X-X'

APPLICATIONS

2 way Mid/High Cabinet for use with Bass Bins for systems up to 500 watts.

LOUDSPEAKERS

Classic 10's or 10 C models.
Studio 10 M or G.
Bullet Tweeters or J Horns with their associated crossovers.

PERFORMANCE

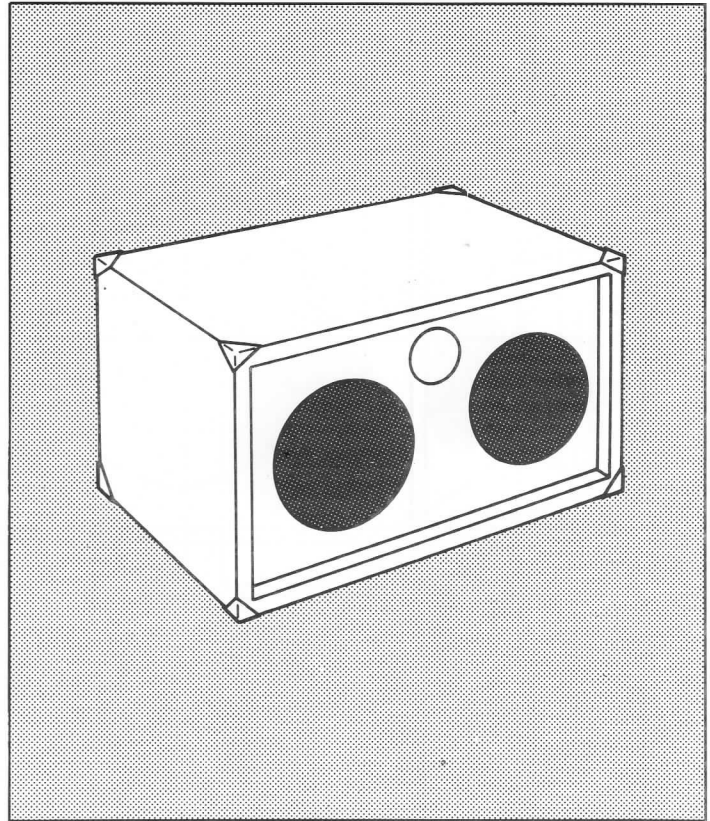
Frequency response from 400 Hz to 20 KHz and sensitivities from 99 dB to 104 dB related to the models selected.

CONSTRUCTION

Fairly straightforward.

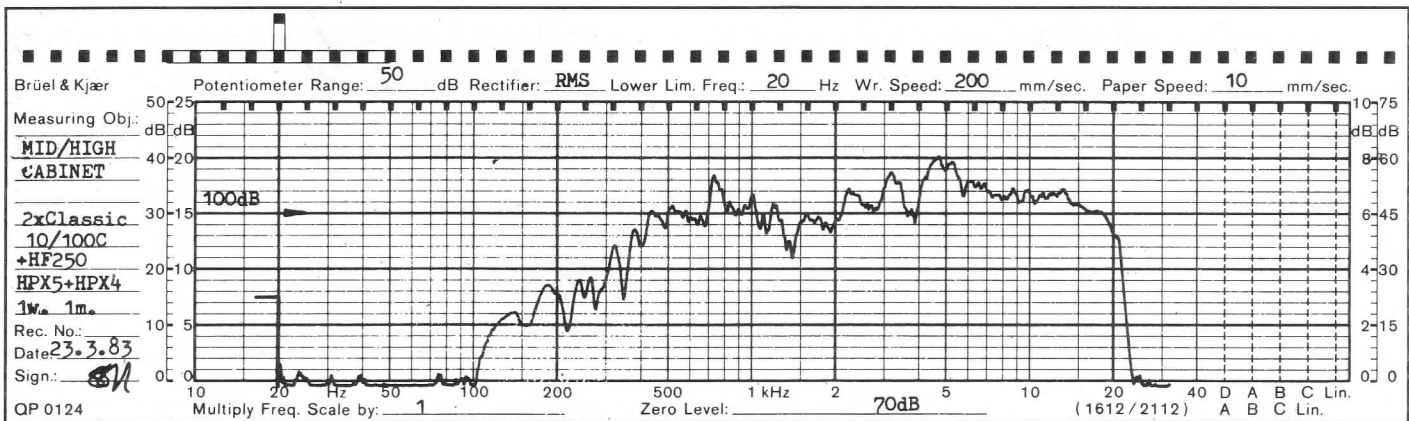
MATERIALS

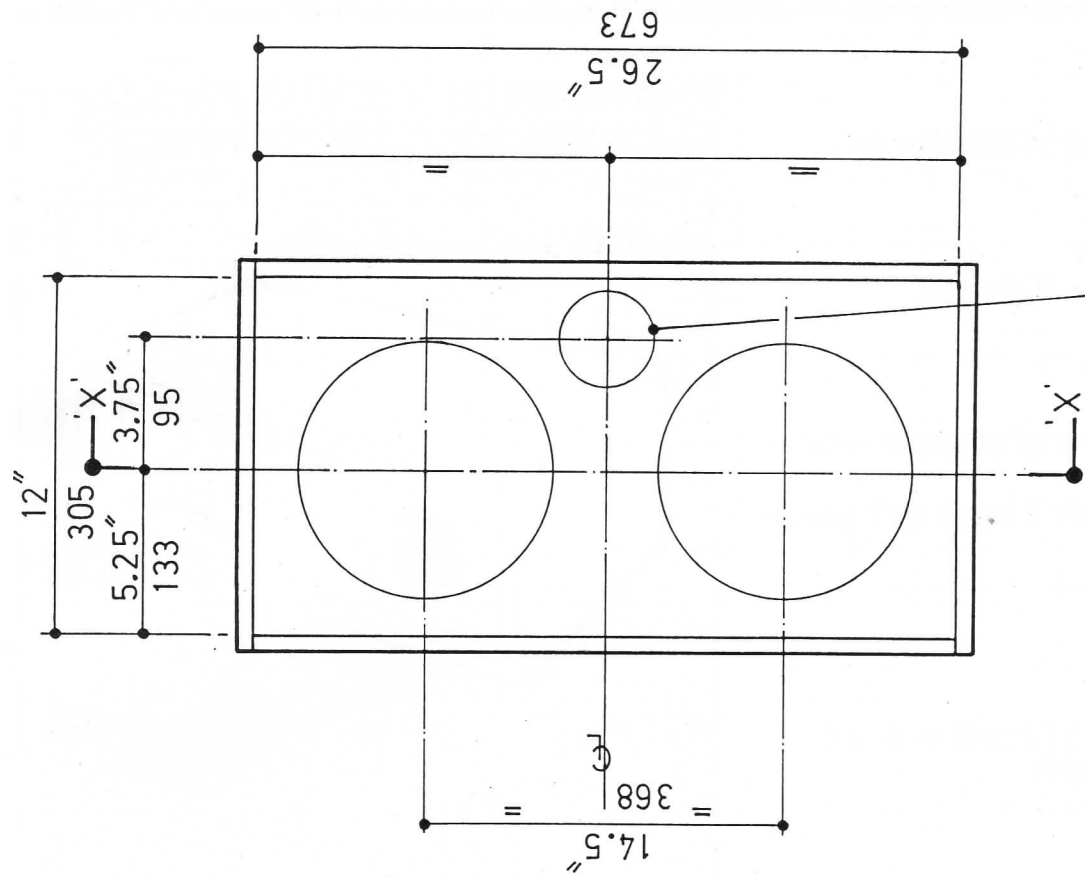
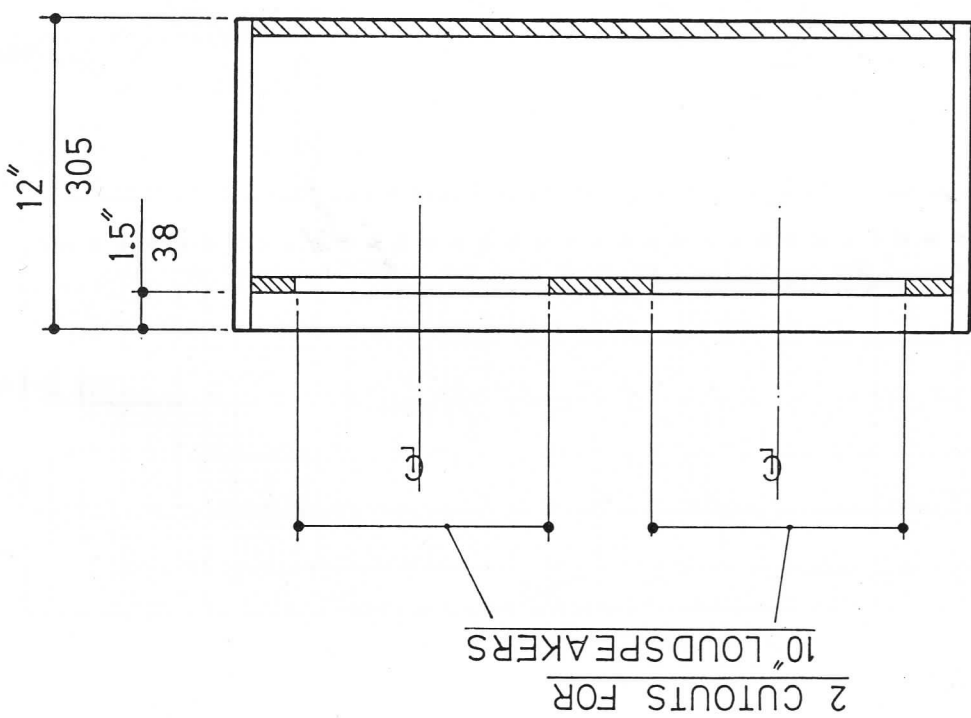
$\frac{1}{2}$ sheet of 18mm ($\frac{3}{4}$ " Board of 8' x 4' size (2438 x 1219).



SPECIAL NOTES

Use with HP X5 crossover.





LARGE HORN CABINET

APPLICATIONS

Horn Cabinet for use in Multiway systems.

LOUDSPEAKERS

HF 100 Flare with 1 or 2 drivers.
Bullet Tweeter.

PERFORMANCE

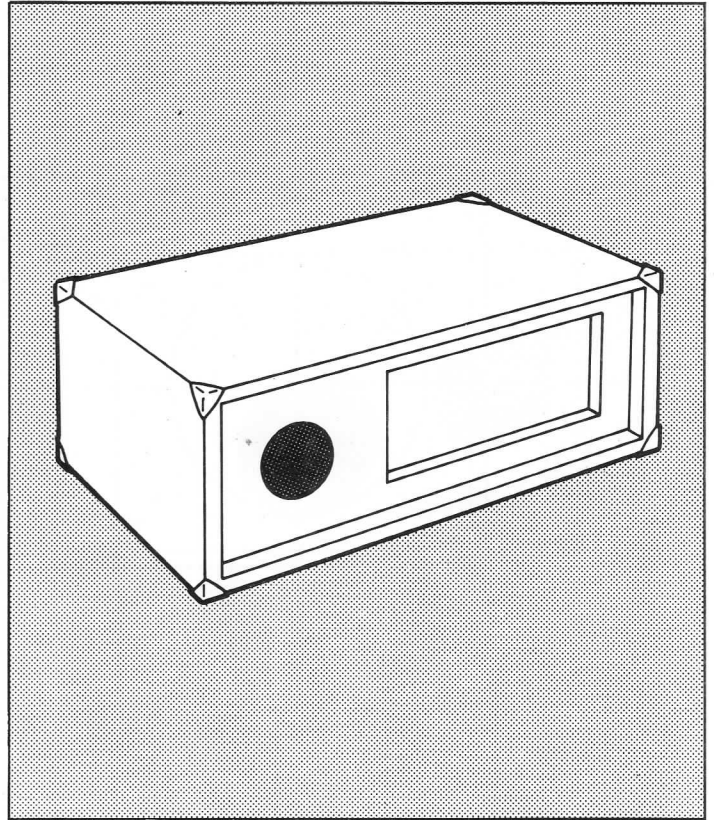
From 1.2 KHz to 20 KHz of smooth clean mid and treble.
Sensitivity of 100dB for 1 Watt at 1 Metre.

CONSTRUCTION

Straightforward.

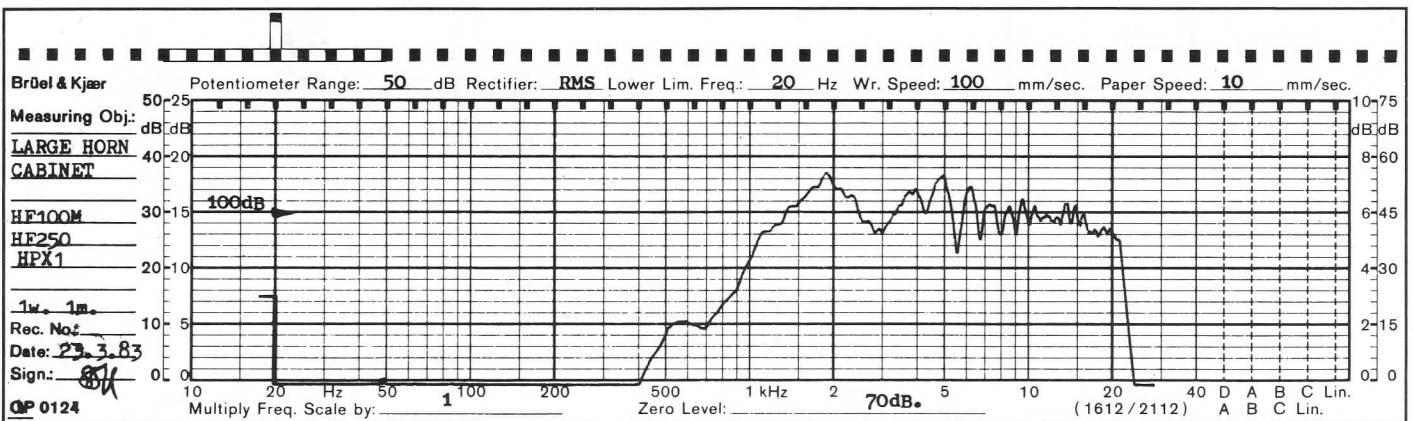
MATERIALS

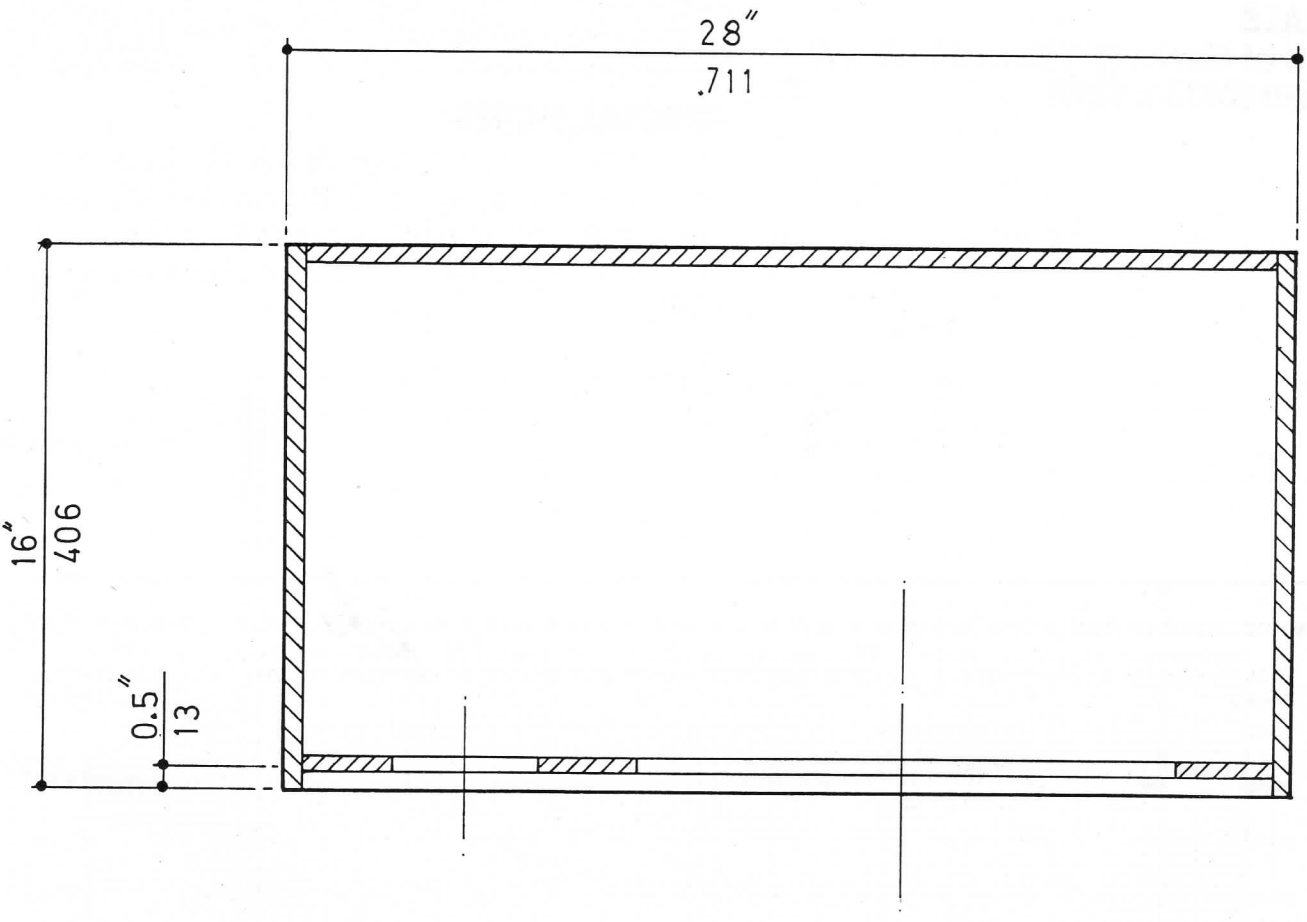
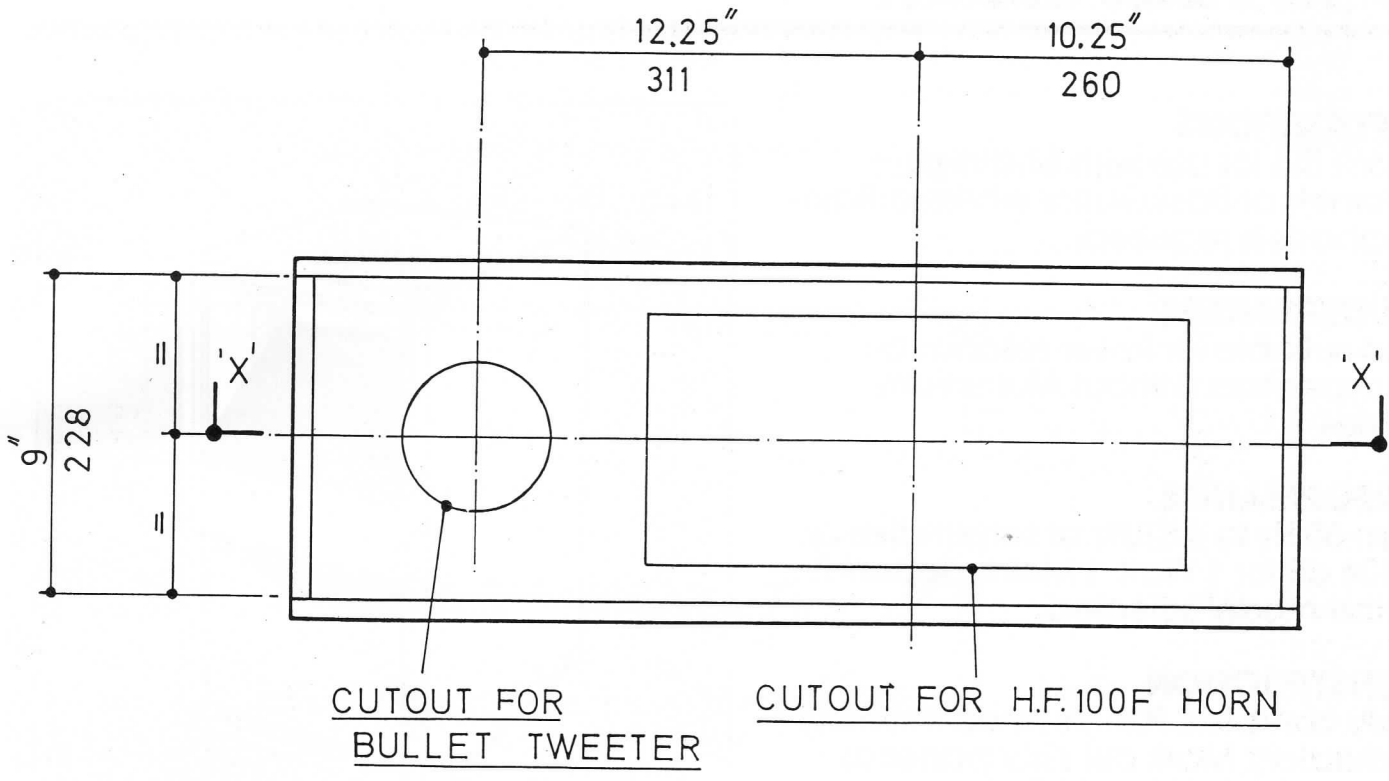
$\frac{2}{3}$ sheets of 18mm ($\frac{3}{4}$ ") Board in 8' x 4' sheets size (2438 x 1219).



SPECIAL NOTES

Use HP X 3A (Level adjusted) with HP X 4 for 1.2 and 5 KHz crossover or HPX 1 with HF100 Driver on output marked HP X 3A and Bullet on output marked HP X 3AR for 5 KHz crossover only.





SECTION 'X'-X'

'W' TYPE BASS CABINET

APPLICATIONS

A Bass Bin for use with Mid/High Cabinets or Bass Guitar where a Bass emphasis is required.

LOUDSPEAKERS

Most suitable for lower resonance loudspeakers without Aluminium Domes.

PERFORMANCE

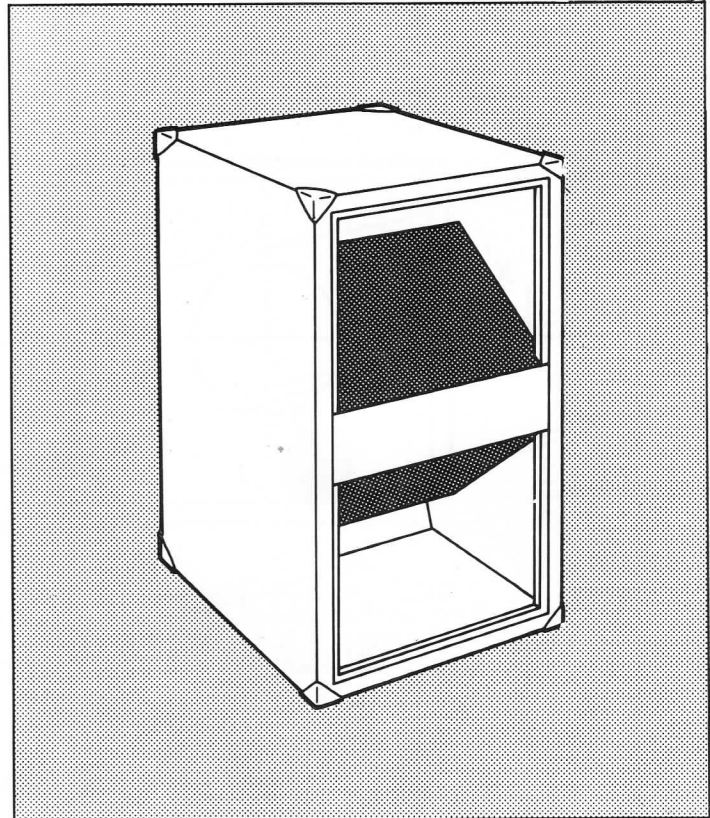
From 60 Hz to 4.5 KHz at sensitivities up to 104 dB for 1 Watt, 1 Metre depending on the model selected.

CONSTRUCTION

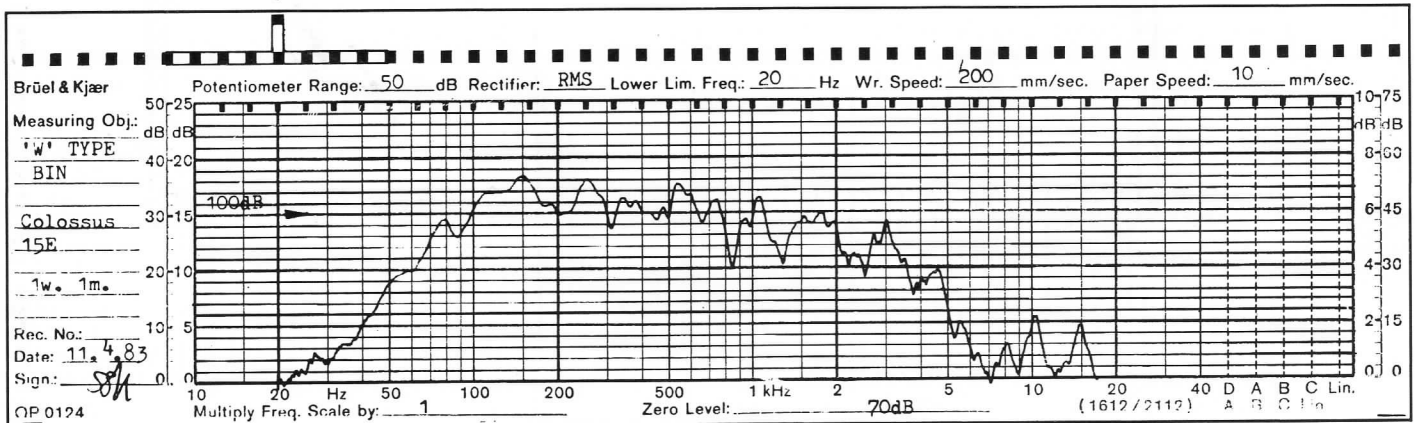
Fairly complex. Panels need mitreing accurately. Mark out side panel as section 'xx' to aid assembly.

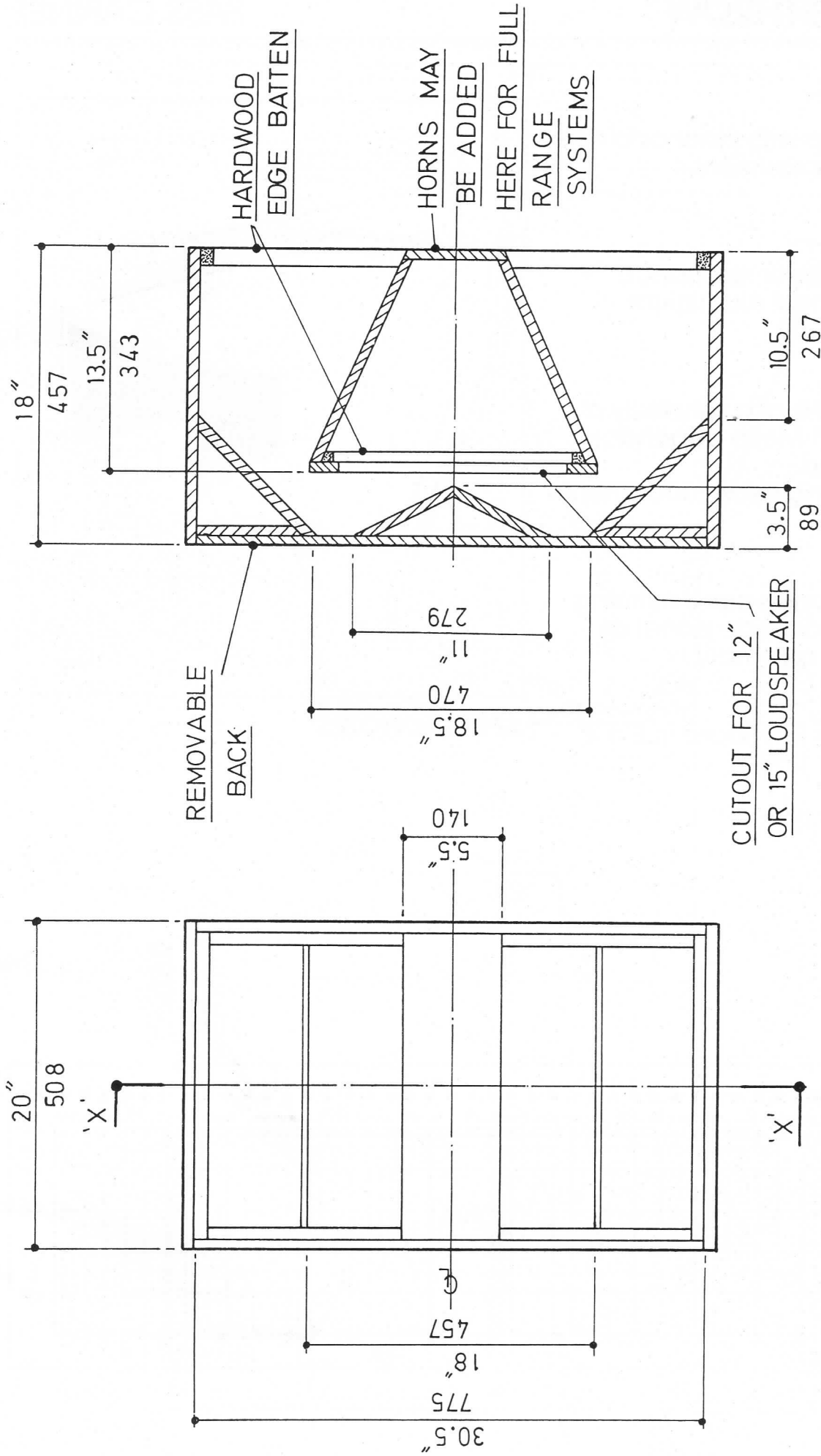
MATERIALS

1 $\frac{1}{3}$ sheets of 18mm ($\frac{3}{4}$ "') Board in 8' x 4' sheets size (2438 x 1219).



SPECIAL NOTES





SECTION 'X-X'

APPLICATIONS

15" Bass Bin for use with other cabinets in P.A. or musical instrument applications.

LOUDSPEAKERS

Most suitable for lower resonance loudspeakers without Aluminium Domes.

PERFORMANCE

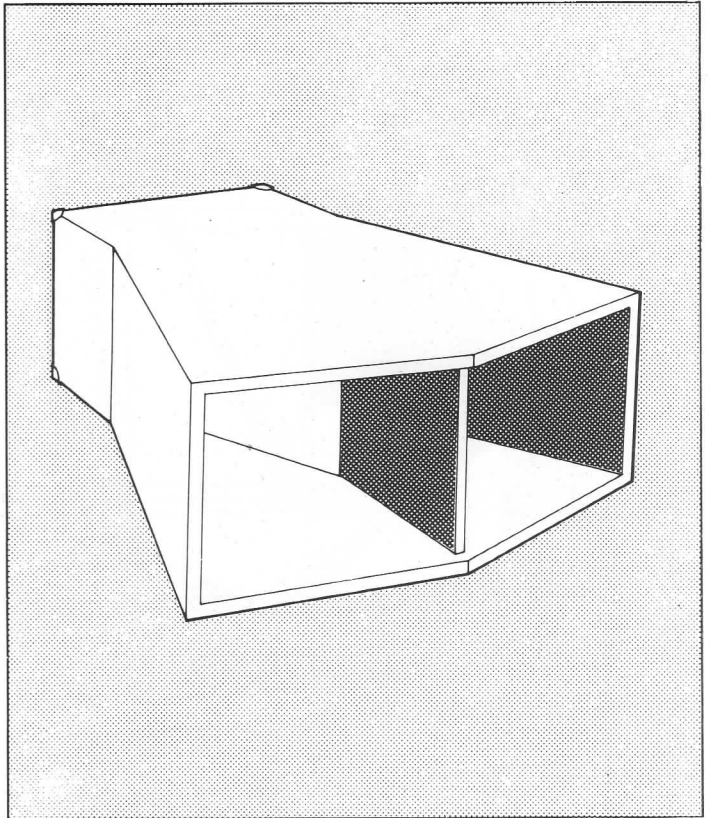
From 60 Hz to 700 Hz at a sensitivity of 104 dB for 1 Watt, 1 Metre dependant on model selected.
High Efficiency Long throw fundamenta Bass.

CONSTRUCTION

Fairly complex. Panels need mitreing accurately. Mark out side panel as section 'xx' to aid assembly.

MATERIALS

1 2/5 sheets of 18mm (3/4") Board in 8' x 4' sheets size (2438 x 1219).



SPECIAL NOTES

